

Mass Spectrometry

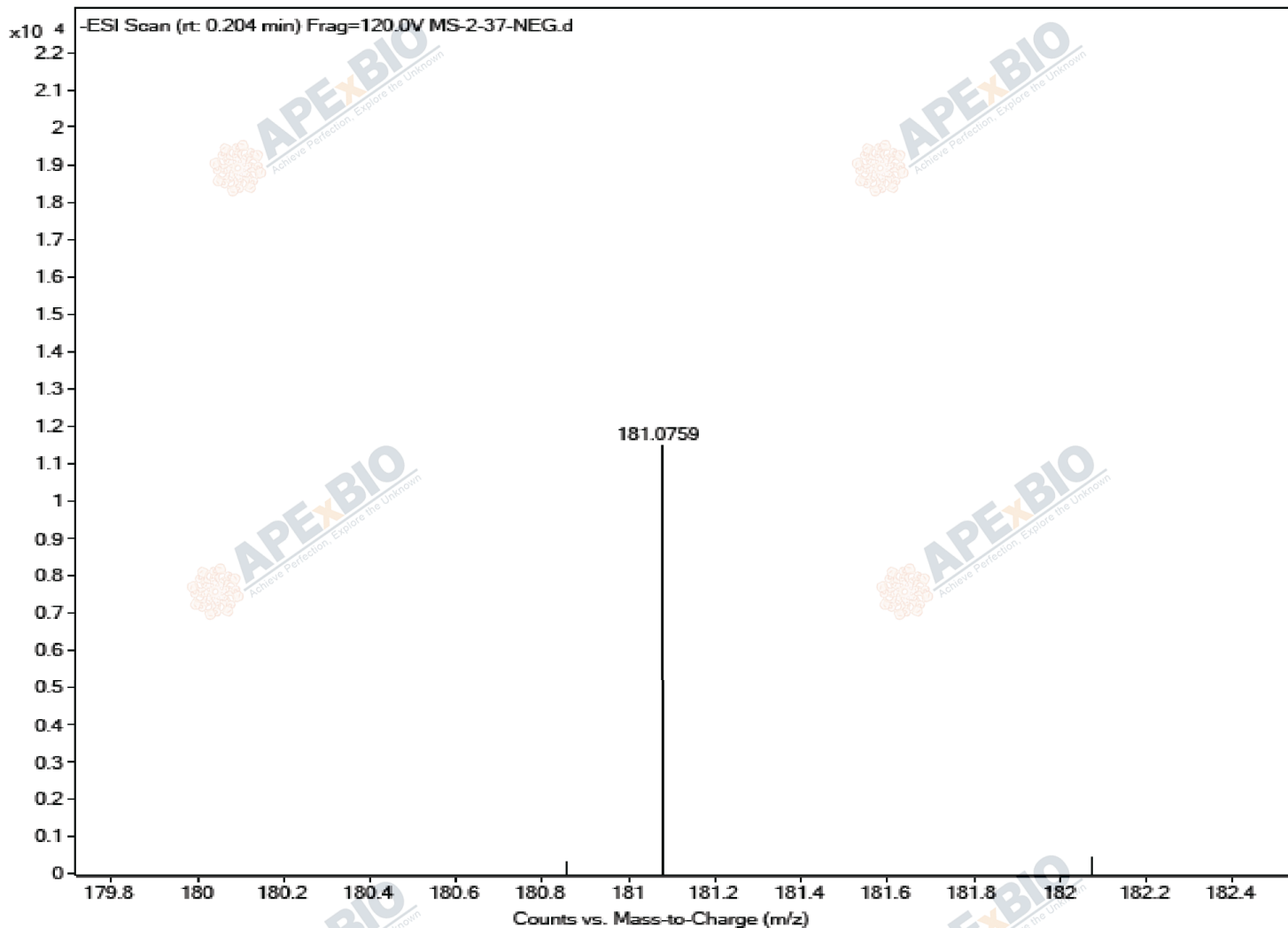
Analysis Information

Product Name: Carbamoylcholine chloride
Operator: David
Injection Date: 9/3/2020 6:39:28 AM
Inj. Volume: 1
Batch No.: 2

Acquisition Parameter

Probe: ESI
Gas Temp: 350°C
Gas Flow: 11L/min
Nebulizer: 50psi
VCap: 4000v
Fragmentor: 70v
Reference: m/z 121.050873, 922.009798
T.Flow: 0.3ml/min
B.conc: 20%H₂O/80%ACN

Result



Molecular Weight: 182.65

m/z([M-H]⁻) Base Peak: 181.0759

Caution

FOR RESEARCH PURPOSES ONLY.

NOT FOR HUMAN, VETERINARY DIAGNOSTIC OR THERAPEUTIC USE.

www.apexbt.com

7505 Fannin street, Suite 410, Houston, TX 77054.

Tel: +1-832-696-8203 | Fax: +1-832-641-3177 | Email: info@apexbt.com

