

## Certificate of Analysis

Product Name: PSB 1115

Cat. No.: B6922

Batch No.: 1

### Physical and Chemical Properties

Batch Molecular Formula: C<sub>14</sub>H<sub>14</sub>N<sub>4</sub>O<sub>5</sub>S

Batch Molecular Weight: 350.35

Purity: >98%

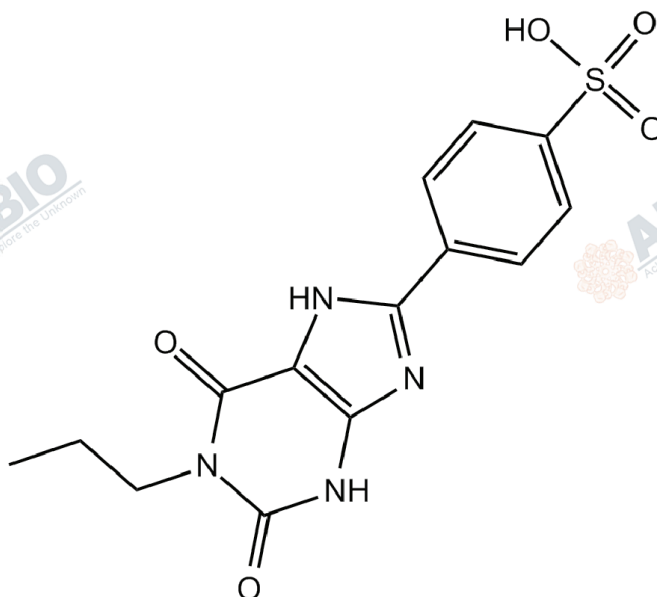
Cas No.: 152529-79-8

### Analytical Data

HPLC: HPLC

Mass Spectrum: Consistent with structure

### Structure



# Caution

**FOR RESEARCH PURPOSES ONLY.**

**NOT FOR HUMAN, VETERINARY DIAGNOSTIC OR THERAPEUTIC USE.**



**APExBIO Technology**



**[www.apexbt.com](http://www.apexbt.com)**

7505 Fannin street, Suite 410, Houston, TX 77054.

Tel: +1-832-696-8203 | Fax: +1-832-641-3177 | Email: [info@apexbt.com](mailto:info@apexbt.com)

