

Certificate of Analysis

Product Name: D-CPP-ene

Cat. No.: B6665

Batch No.: 1

Physical and Chemical Properties

Batch Molecular Formula: C₈H₁₅N₂O₅P

Batch Molecular Weight: 250.19

Purity: >98%

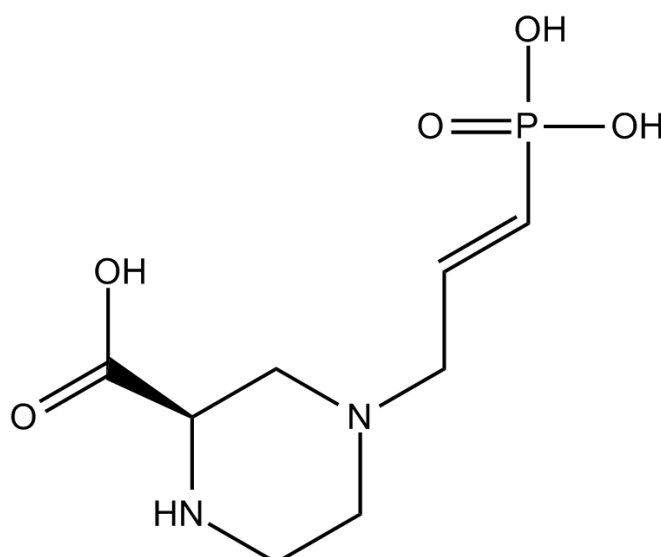
Cas No.: 117414-74-1

Analytical Data

HPLC: Shows Min 98% purity

Mass Spectrum: Consistent with structure

Structure



Caution

FOR RESEARCH PURPOSES ONLY.

NOT FOR HUMAN, VETERINARY DIAGNOSTIC OR THERAPEUTIC USE.

APEX BIO Technology

www.apexbt.com

7505 Fannin Street, Suite 410, Houston, TX 77054.

Tel: +1-832-696-8203 | Fax: +1-832-641-3177 | Email: info@apexbt.com