

High Performance Liquid Chromatography

Analysis Information

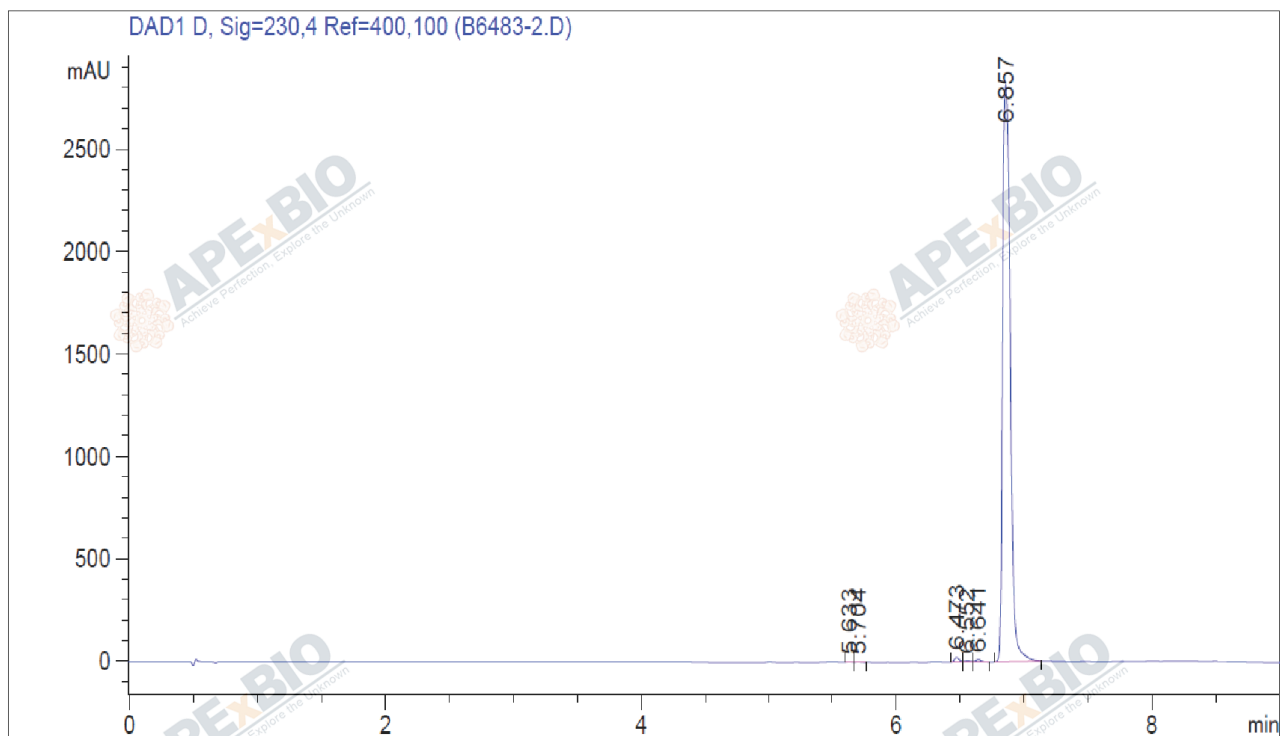
Product Name: Luzindole
Operator: David
Injection Date: 12/31/2021 11:58:56 AM
Batch No.: 2

HPLC Condition

Column : Athena C18, 3 μ m, 2.1mm \times 100 mm
Solvent A: ACN+0.1%TFA
Solvent B: H2O+0.1%TFA
Gradient:

Time	A	B
0.0min	0%	100%
1.5min	0%	100%
6.0min	95%	5%
9.0min	95%	5%
9.0min	Stop	Stop

Flow rate: 0.46ml/min
Wavelength: 230nm
Volume: 3 μ l



Rank	RetTime(min)	Area(mAU*s)	Area %
1	5.633	4.61253	0.0388
2	5.704	3.95395	0.0332
3	6.473	64.67536	0.5437
4	6.552	23.40078	0.1967
5	6.641	39.23634	0.3299
6	6.857	1.17586e4	98.8576

Caution

FOR RESEARCH PURPOSES ONLY.

NOT FOR HUMAN, VETERINARY DIAGNOSTIC OR THERAPEUTIC USE.

7505 Fannin street, Suite 410, Houston, TX 77054.

Tel: +1-832-696-8203 | Fax: +1-832-641-3177 | Email: info@apexbt.com

