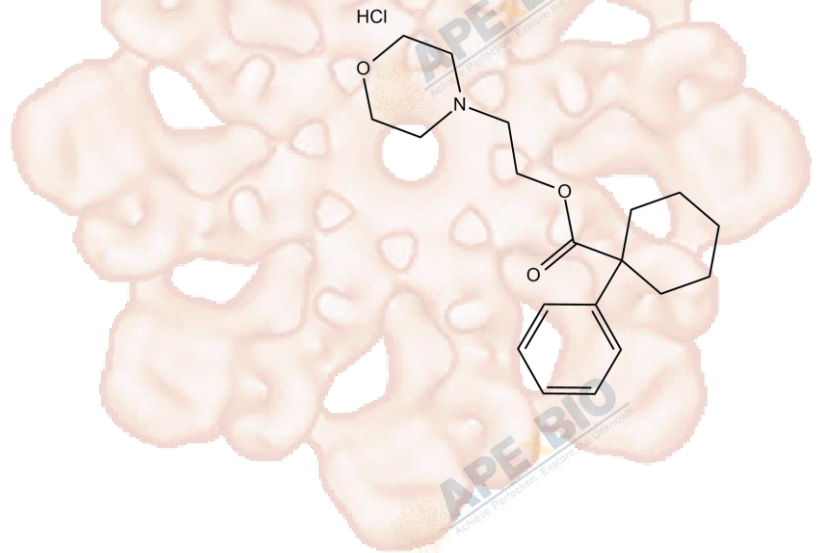


Product Data Sheet

PRE-084 hydrochloride

Cat. No.:	B6364
CAS No.:	75136-54-8
Formula:	C ₁₉ H ₂₇ NO ₃ ·HCl
M.Wt:	353.89
Synonyms:	
Target:	GPCR/G protein
Pathway:	Sigma Receptor
Storage:	Store at RT



Solvent & Solubility

insoluble in EtOH; insoluble in H₂O; ≥17.3 mg/mL in DMSO with gentle warming

In Vitro

Preparing Stock Solutions	Solvent		Mass		
	Concentration		1mg	5mg	10mg
	1 mM		2.8257 mL	14.1287 mL	28.2574 mL
	5 mM		0.5651 mL	2.8257 mL	5.6515 mL
	10 mM		0.2826 mL	1.4129 mL	2.8257 mL

Please refer to the solubility information to select the appropriate solvent.

Biological Activity

Shortsummary

selective σ 1 receptor agonist

IC₅₀ & Target

In Vitro

Cell Viability Assay

Preparation method:

In Vivo

Animal experiment

Applications:

Product Citations

1. Zhu J, Zang S, et al."Involvement of the delayed rectifier outward potassium channel Kv2.1 in methamphetamine-induced neuronal apoptosis via the p38 mitogen-activated protein kinase signaling pathway." J Appl Toxicol. 2018 Jan 3.PMID:29297590

See more customer validations on www.apexbt.com.

References

Caution

FOR RESEARCH PURPOSES ONLY.

NOT FOR HUMAN, VETERINARY DIAGNOSTIC OR THERAPEUTIC USE.

Specific storage and handling information for each product is indicated on the product datasheet. Most APEX BIO products are stable under the recommended conditions. Products are sometimes shipped at a temperature that differs from the recommended storage temperature. Short-term storage of many products are stable in the short-term at temperatures that differ from that required for long-term storage. We ensure that the product is shipped under conditions that will maintain the quality of the reagents. Upon receipt of the product, follow the storage recommendations on the product data sheet.

APEX BIO Technology

www.apexbt.com

7505 Fannin Street, Suite 410, Houston, TX 77054.

Tel: +1-832-696-8203 | Fax: +1-832-641-3177 | Email: info@apexbt.com

