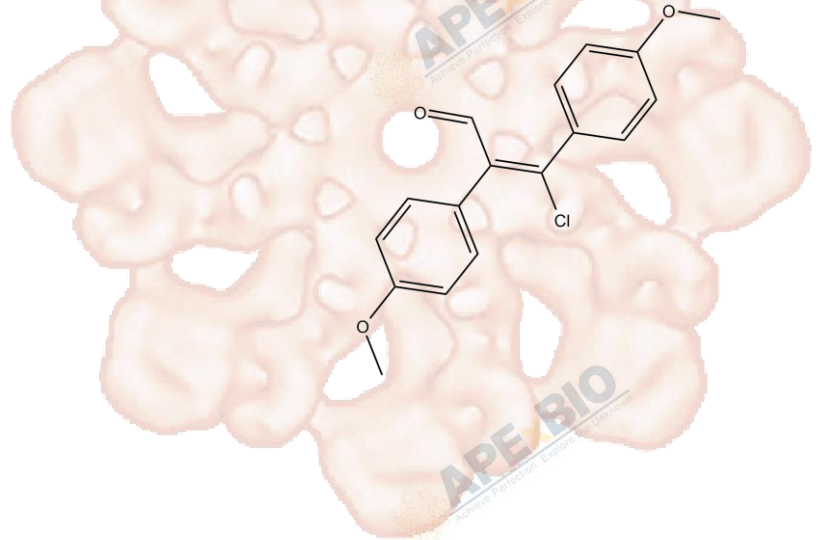


# Product Data Sheet

## Windorphen

<b>Cat. No.:</b>	B5977
<b>CAS No.:</b>	19881-70-0
<b>Formula:</b>	C17H15ClO3
<b>M.Wt:</b>	302.75
<b>Synonyms:</b>	
<b>Target:</b>	Stem Cell
<b>Pathway:</b>	Wnt/ $\beta$ -catenin
<b>Storage:</b>	Store at -20°C



### Solvent & Solubility

insoluble in EtOH; insoluble in H<sub>2</sub>O;  $\geq 11.45$  mg/mL in DMSO

In Vitro

Preparing Stock Solutions	Solvent	Mass		
		1mg	5mg	10mg
	<b>Concentration</b>			
	<b>1 mM</b>	3.3031 mL	16.5153 mL	33.0306 mL
	<b>5 mM</b>	0.6606 mL	3.3031 mL	6.6061 mL
	<b>10 mM</b>	0.3303 mL	1.6515 mL	3.3031 mL

Please refer to the solubility information to select the appropriate solvent.

### Biological Activity

Shortsummary

Wnt inhibitor

IC<sub>50</sub> & Target

In Vitro

#### Cell Viability Assay

Preparation method:

In Vivo

#### Animal experiment

Applications:

### Product Citations

See more customer validations on [www.apexbt.com](http://www.apexbt.com).

## References

## Caution

**FOR RESEARCH PURPOSES ONLY.**

**NOT FOR HUMAN, VETERINARY DIAGNOSTIC OR THERAPEUTIC USE.**

Specific storage and handling information for each product is indicated on the product datasheet. Most APEX BIO products are stable under the recommended conditions. Products are sometimes shipped at a temperature that differs from the recommended storage temperature. Shortterm storage of many products are stable in the short-term at temperatures that differ from that required for long-term storage. We ensure that the product is shipped under conditions that will maintain the quality of the reagents. Upon receipt of the product, follow the storage recommendations on the product data sheet.

**APEX BIO Technology**

**[www.apexbt.com](http://www.apexbt.com)**

7505 Fannin street, Suite 410, Houston, TX 77054.

Tel: +1-832-696-8203 | Fax: +1-832-641-3177 | Email: [info@apexbt.com](mailto:info@apexbt.com)

