

Certificate of Analysis

Product Name: C-type natriuretic peptide (1-22) (human, rat, swine)

Cat. No.: B5441

Batch No.: 2

Physical and Chemical Properties

Batch Molecular Formula: C₉₃H₁₅₇N₂₇O₂₈S₃

Batch Molecular Weight: 2197.61

Purity: >99%

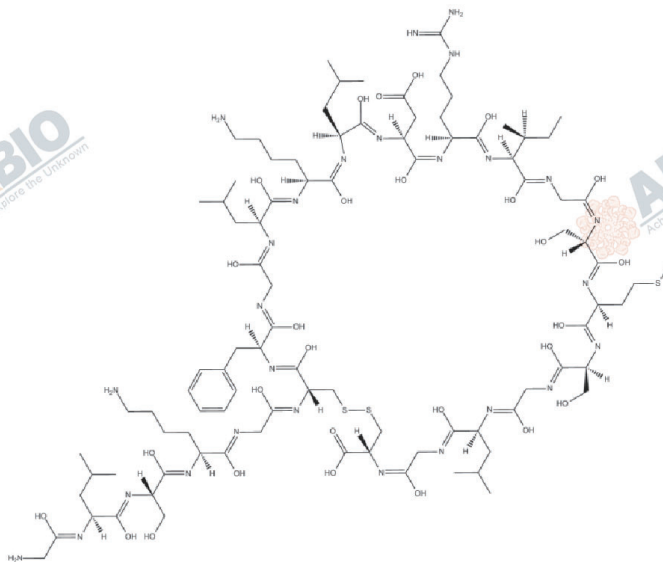
Cas No.: 127869-51-6

Analytical Data

HPLC: HPLC

Mass Spectrum: Consistent with structure

Structure



Caution

FOR RESEARCH PURPOSES ONLY.

NOT FOR HUMAN, VETERINARY DIAGNOSTIC OR THERAPEUTIC USE.



APExBIO Technology



www.apexbt.com

7505 Fannin street, Suite 410, Houston, TX 77054.

Tel: +1-832-696-8203 | Fax: +1-832-641-3177 | Email: info@apexbt.com

