

## Certificate of Analysis

**Product Name:** PEPA  
**Cat. No.:** B5350  
**Batch No.:** 1

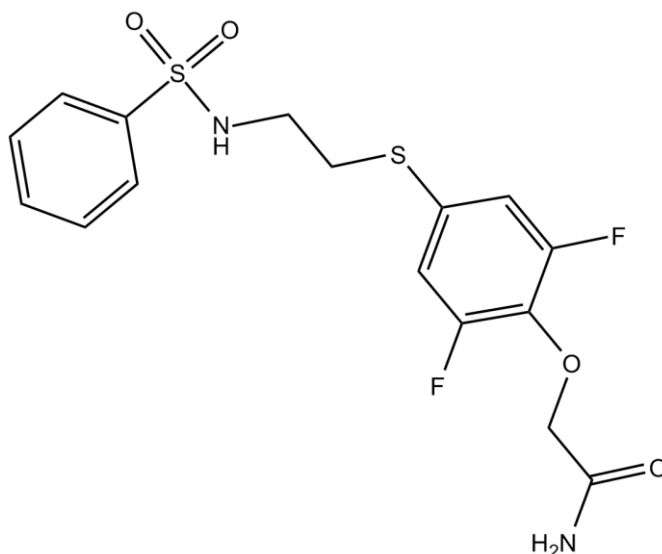
### Physical and Chemical Properties

**Batch Molecular Formula:** C<sub>16</sub>H<sub>16</sub>F<sub>2</sub>N<sub>2</sub>O<sub>4</sub>S<sub>2</sub>  
**Batch Molecular Weight:** 402.44  
**Purity:** >98%  
**Cas No.:** 141286-78-4

### Analytical Data

**HPLC:** Shows Min 98% purity  
**Mass Spectrum:** Consistent with structure

### Structure



Caution

**FOR RESEARCH PURPOSES ONLY.**

**NOT FOR HUMAN, VETERINARY DIAGNOSTIC OR THERAPEUTIC USE.**

**APEX BIO Technology**

**[www.apexbt.com](http://www.apexbt.com)**

7505 Fannin Street, Suite 410, Houston, TX 77054.

Tel: +1-832-696-8203 | Fax: +1-832-641-3177 | Email: [info@apexbt.com](mailto:info@apexbt.com)