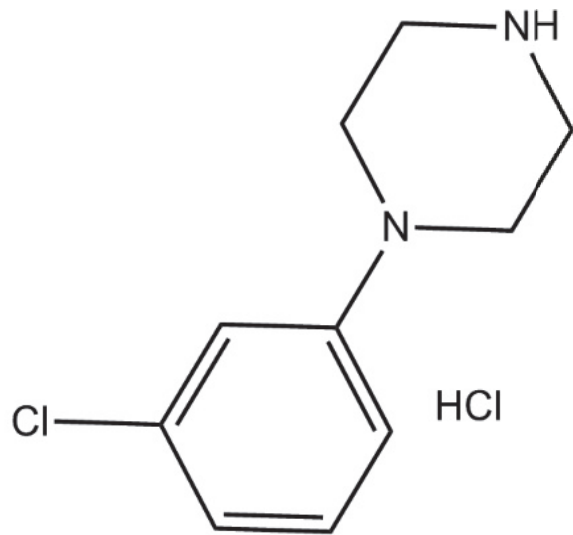
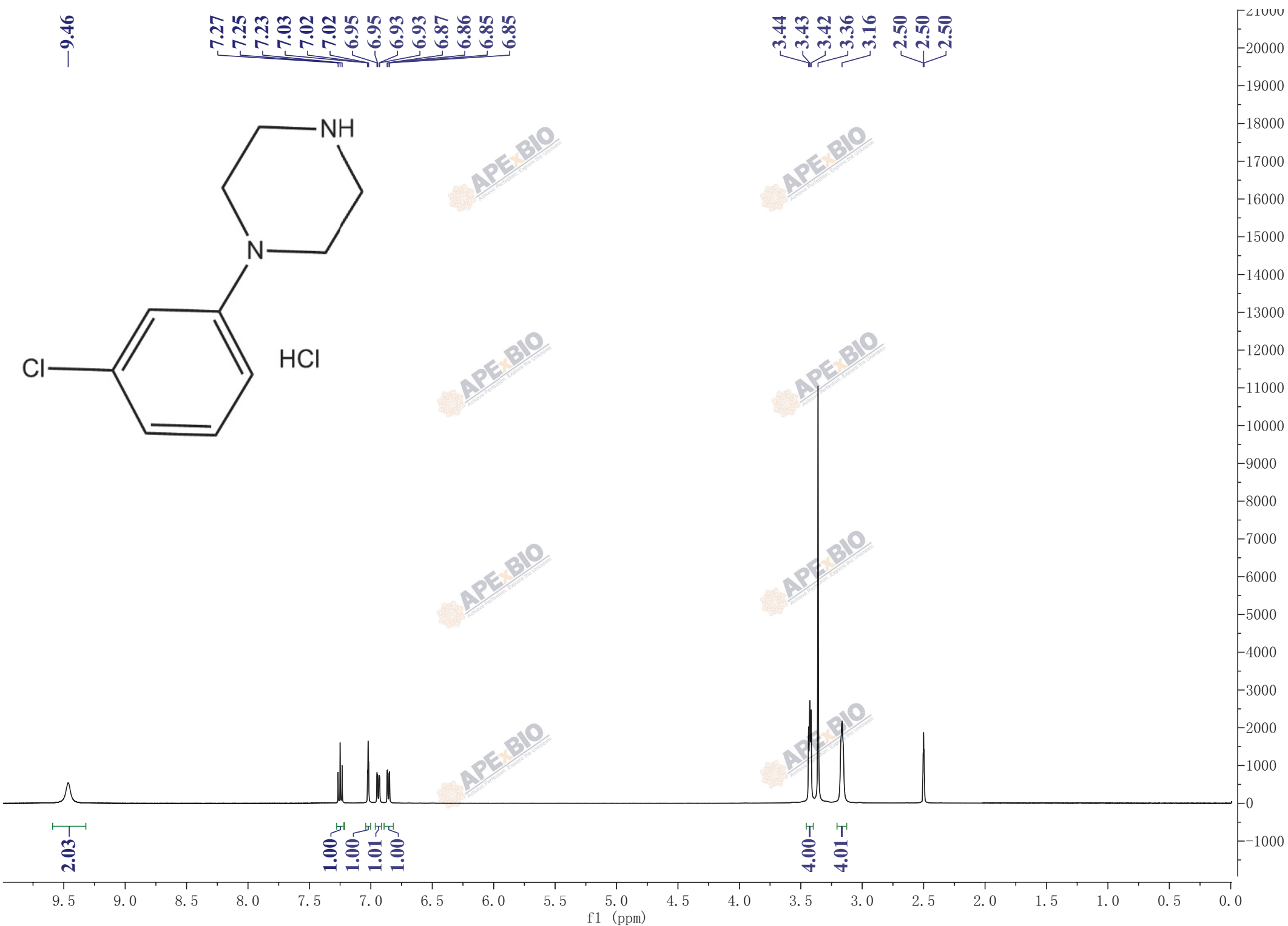


—9.46



7.27
7.25
7.23
7.03
7.02
7.02
6.95
6.95
6.93
6.93
6.87
6.86
6.85
6.85

3.44
3.43
3.42
3.36
3.16
2.50
2.50
2.50



2.03

1.00
1.00
1.01
1.00

4.00

4.01

f1 (ppm)