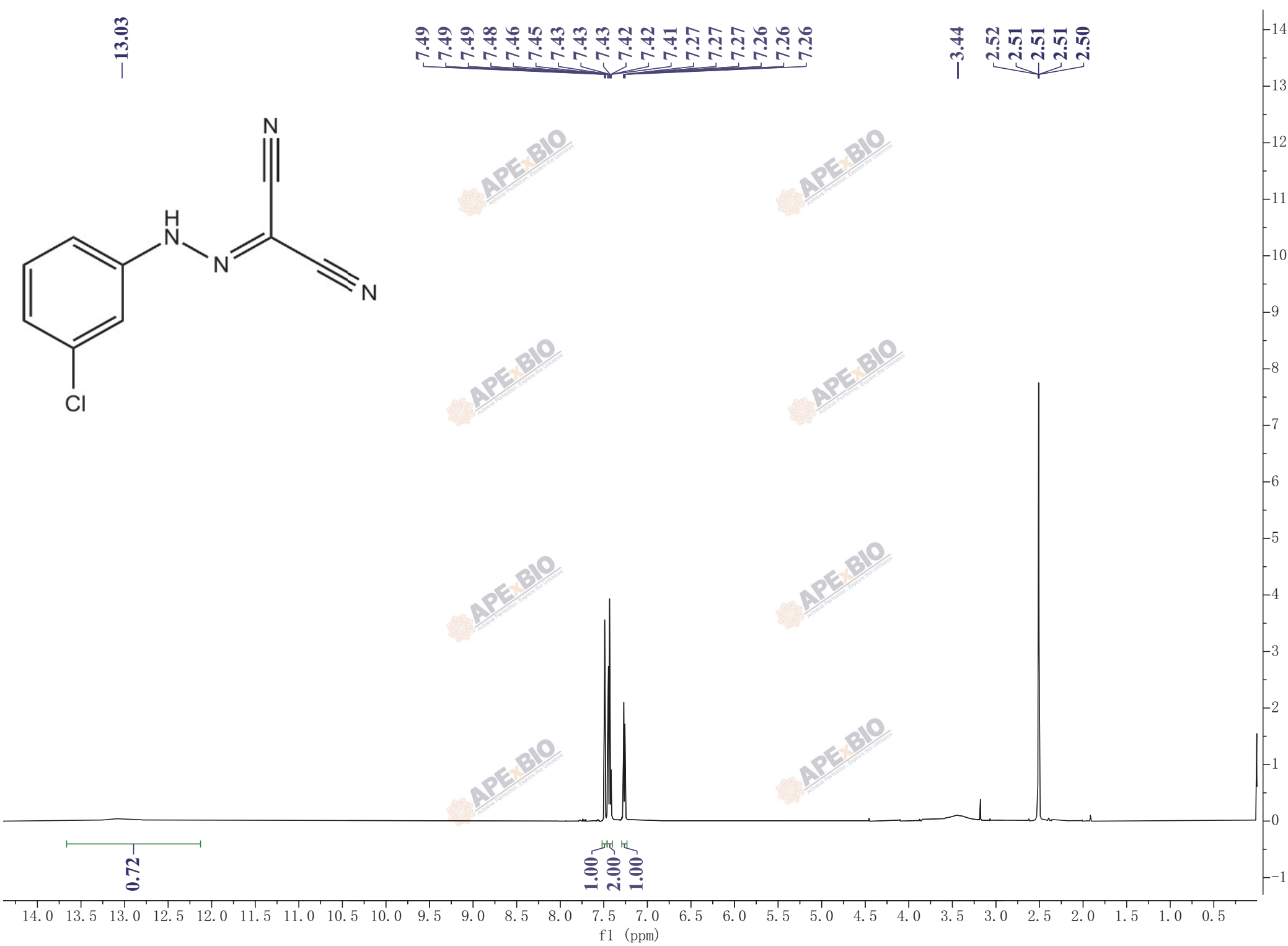


—13.03

7.49  
7.49  
7.49  
7.48  
7.46  
7.45  
7.43  
7.43  
7.43  
7.42  
7.42  
7.41  
7.27  
7.27  
7.27  
7.26  
7.26  
7.26

—3.44

2.52  
2.51  
2.51  
2.51  
2.50



0.72

1.00  
2.00  
1.00

-1

0

1

2

3

4

5

6

7

8

9

10

11

12

13

14

f1 (ppm)