

High Performance Liquid Chromatography

Analysis Information

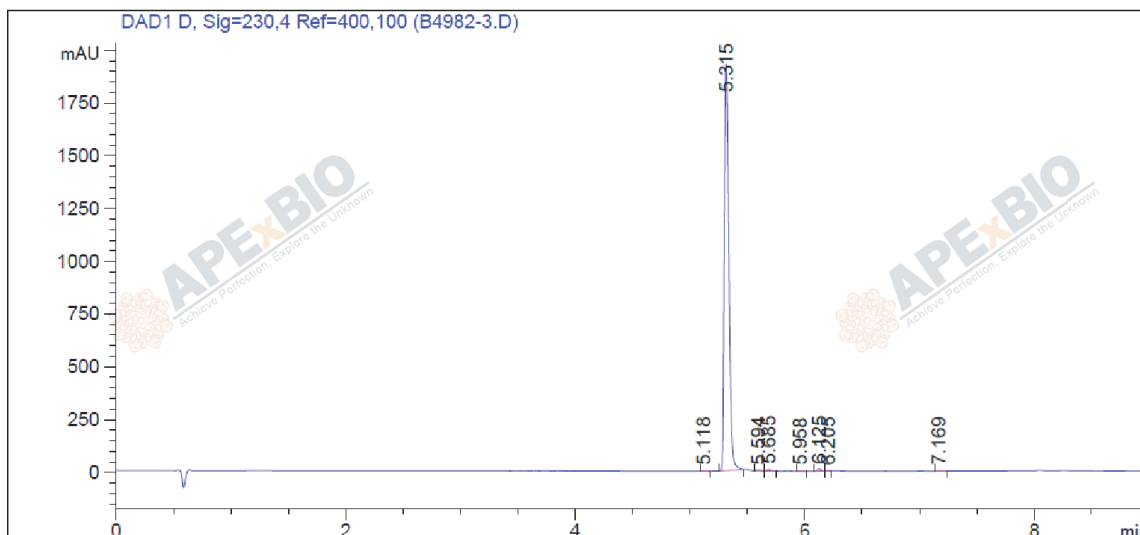
Product Name: Topotecan
Operator: David
Injection Date: 10/12/2021 12:34:10 PM
Batch No.: 3

HPLC Condition

Column : Athena C18, 3 μ m, 2.1mm \times 100 mm
Solvent A: ACN+0.1%TFA
Solvent B: H2O+0.1%TFA
Gradient:

| Time | A | B |
|--------|------|------|
| 0.0min | 0% | 100% |
| 1.5min | 0% | 100% |
| 6.0min | 95% | 5% |
| 9.0min | 95% | 5% |
| 9.0min | Stop | Stop |

Flow rate: 0.46ml/min
Wavelength: 230nm
Volume: 3 μ l



| Rank | RetTime(min) | Area(mAU*s) | Area % |
|------|--------------|-------------|---------|
| 1 | 5.118 | 3.55914 | 0.0673 |
| 2 | 5.315 | 5226.54785 | 98.8829 |
| 3 | 5.594 | 5.47120 | 0.1035 |
| 4 | 5.685 | 14.66447 | 0.2774 |
| 5 | 5.958 | 3.40426 | 0.0644 |
| 6 | 6.125 | 21.42671 | 0.4054 |
| 7 | 6.205 | 4.46060 | 0.0844 |
| 8 | 7.169 | 6.05763 | 0.1146 |

Caution

FOR RESEARCH PURPOSES ONLY.

NOT FOR HUMAN, VETERINARY DIAGNOSTIC OR THERAPEUTIC USE.

APEX BIO Technology

www.apexbt.com

7505 Fannin street, Suite 410, Houston, TX 77054.

Tel: +1-832-696-8203 | Fax: +1-832-641-3177 | Email: info@apexbt.com

