

High Performance Liquid Chromatography

Analysis Information

Product Name: Remodelin
Operator: David
Injection Date: 6/10/2020 10:28:17 PM
Batch No.: 2

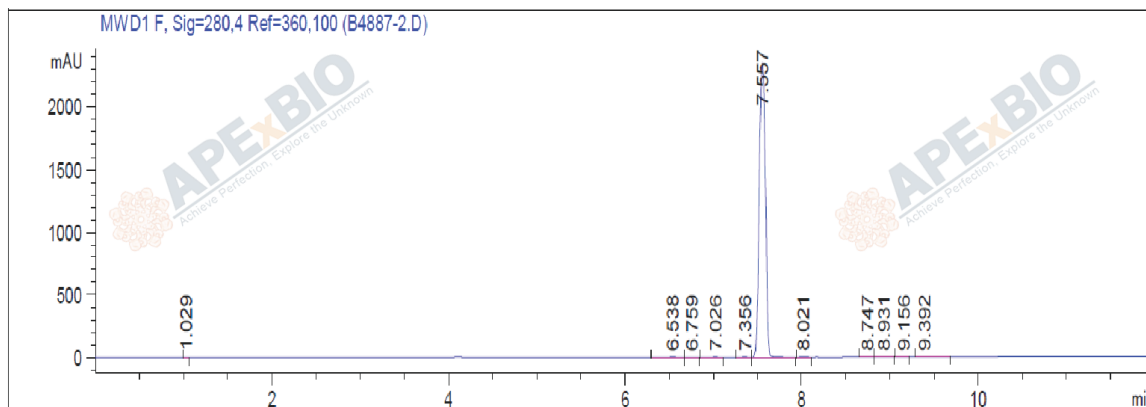
HPLC Condition

Column : ZORBAX Eclipse Pluse C18 3.5 μ m 4.6mmx100mm
Solvent A: H2O+0.1%TFA
Solvent B: ACN+0.1%TFA
Gradient:

Time	A	B
0.0min	80%	20%
2.0min	80%	20%
7.0min	5%	95%
10.0min	0%	100%
12.0min	0%	100%
15.0min	Stop	Stop

Flow rate: 1ml/min
Wavelength: 280nm
Volume: 5 μ l

Result



Rank	RetTime(min)	Area(mAU*s)	Area %
1	1.029	4.51431	0.0394
2	6.538	14.10889	0.1231
3	6.759	4.67506	0.0408
4	7.026	8.86899	0.0774
5	7.356	7.26013	0.0634
6	7.557	1.13870e4	99.3658
7	8.021	6.95471	0.0607
8	8.747	4.00955	0.0350
9	8.931	7.37403	0.0643
10	9.156	3.73677	0.0326
11	9.392	11.17706	0.0975

Caution

FOR RESEARCH PURPOSES ONLY.

NOT FOR HUMAN, VETERINARY DIAGNOSTIC OR THERAPEUTIC USE.

APEX BIO Technology

www.apexbt.com

7505 Fannin street, Suite 410, Houston, TX 77054.

Tel: +1-832-696-8203 | Fax: +1-832-641-3177 | Email: info@apexbt.com

