



High Performance Liquid Chromatography

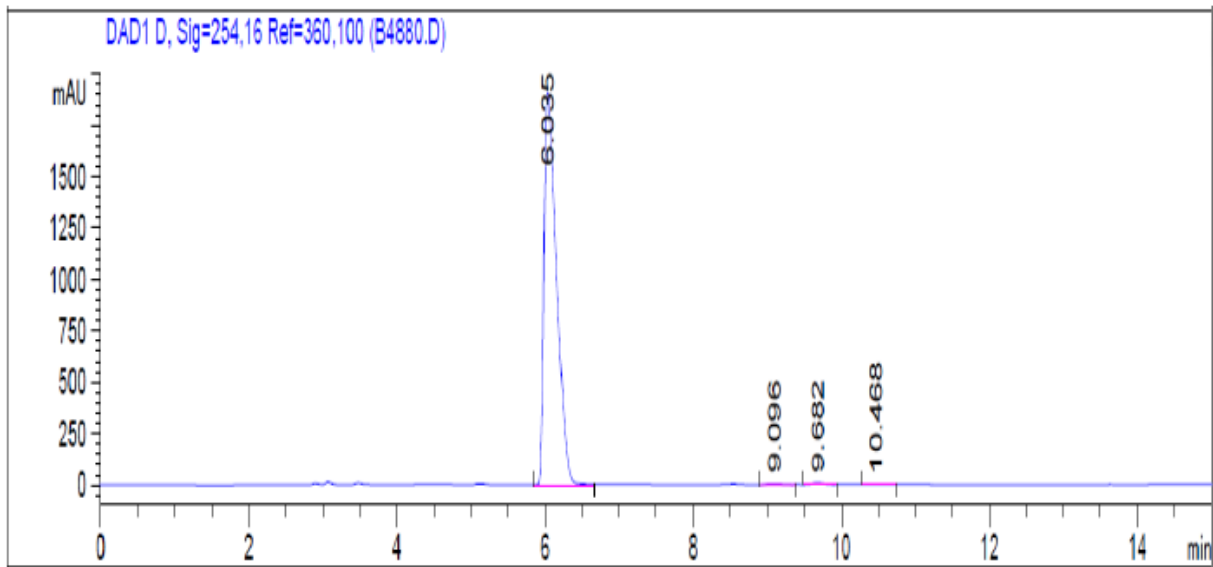
1. Analysis Information

Product Name:	WS6
Operator:	David
Injection Date:	2015-7-7 4:24:36
Batch No.:	1

2. HPLC Condition

Column:	Athena C18, 3 μ m, 2.1mm \times 100 mm																			
Solvent A:	0.1% H3PO4 in 100% Acetonitrile																			
Solvent B:	0.1% H3PO4 in 100% Water																			
Gradient:	<table border="1"><thead><tr><th>Time</th><th>A</th><th>B</th></tr></thead><tbody><tr><td>0.0min</td><td>0%</td><td>100%</td></tr><tr><td>2.0min</td><td>0%</td><td>100%</td></tr><tr><td>6.0min</td><td>95%</td><td>5%</td></tr><tr><td>15.0min</td><td>10%</td><td>90%</td></tr><tr><td>15.0min</td><td>Stop</td><td>Stop</td></tr></tbody></table>		Time	A	B	0.0min	0%	100%	2.0min	0%	100%	6.0min	95%	5%	15.0min	10%	90%	15.0min	Stop	Stop
Time	A	B																		
0.0min	0%	100%																		
2.0min	0%	100%																		
6.0min	95%	5%																		
15.0min	10%	90%																		
15.0min	Stop	Stop																		
Flow rate:	0.4ml/min																			
Wavelength:	254nm																			
Volume:	10 μ l																			

3. Result



Rank	RetTime(min)	Area(mAU*s)	Area %
1	6.035	2.23116e4	99.1273
2	9.096	79.11172	0.3515
3	9.682	101.31207	0.4501
4	10.468	15.99818	0.0711