

Mass Spectrometry

Analysis Information

Product Name: Ciclesonide
Operator: David
Injection Date: 8/26/2016 9:09:39 PM
Inj. Volume: 1
Batch No.: 2

Acquisition Parameter

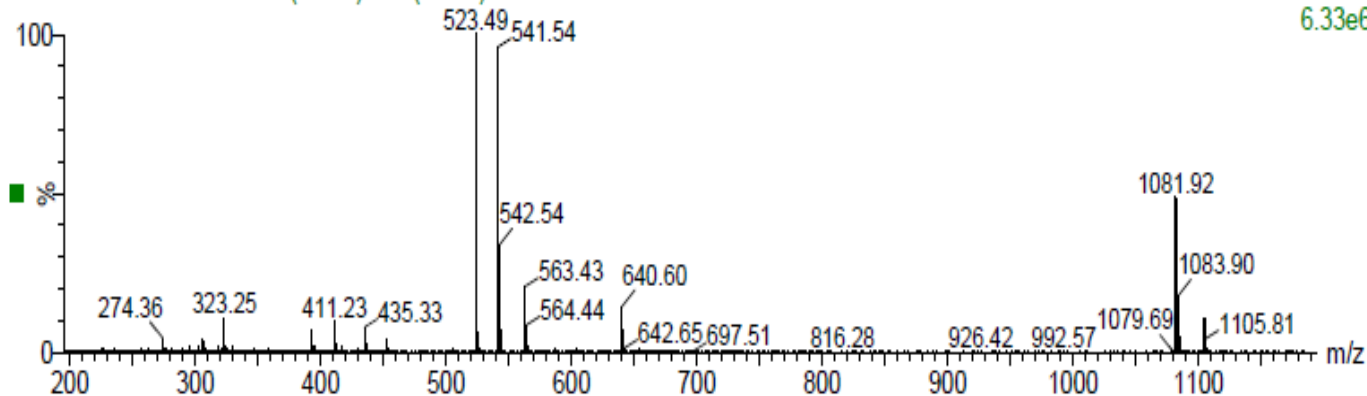
Probe: ESI
Gas Temp: 350°C
Gas Flow: 11L/min
Nebulizer: 50psi
VCap: 4000v
Fragmentor: 70v
Reference: m/z 121.050873, 922.009798
T.Flow: 0.3ml/min
B.conc: 20%H2O/80%ACN

Result

NT-S20160826-040

20160826-126544-47-6 19 (0.321) Cm (10:19)

1: Scan ES+
6.33e6



Molecular Weight: 540.69

m/z([M+H]⁺) Base Peak: 541.54

m/z([M+2H]⁺) Base Peak: 542.54

Caution

FOR RESEARCH PURPOSES ONLY.

NOT FOR HUMAN, VETERINARY DIAGNOSTIC OR THERAPEUTIC USE.

APEX BIO Technology

www.apexbt.com

7505 Fannin street, Suite 410, Houston, TX 77054.

Tel: +1-832-696-8203 | Fax: +1-832-641-3177 | Email: info@apexbt.com