

# High Performance Liquid Chromatography

## Analysis Information

**Product Name:** Ketorolac  
**Operator:** David  
**Injection Date:** 4/6/2016 4:58:41 PM  
**Batch No.:** 2

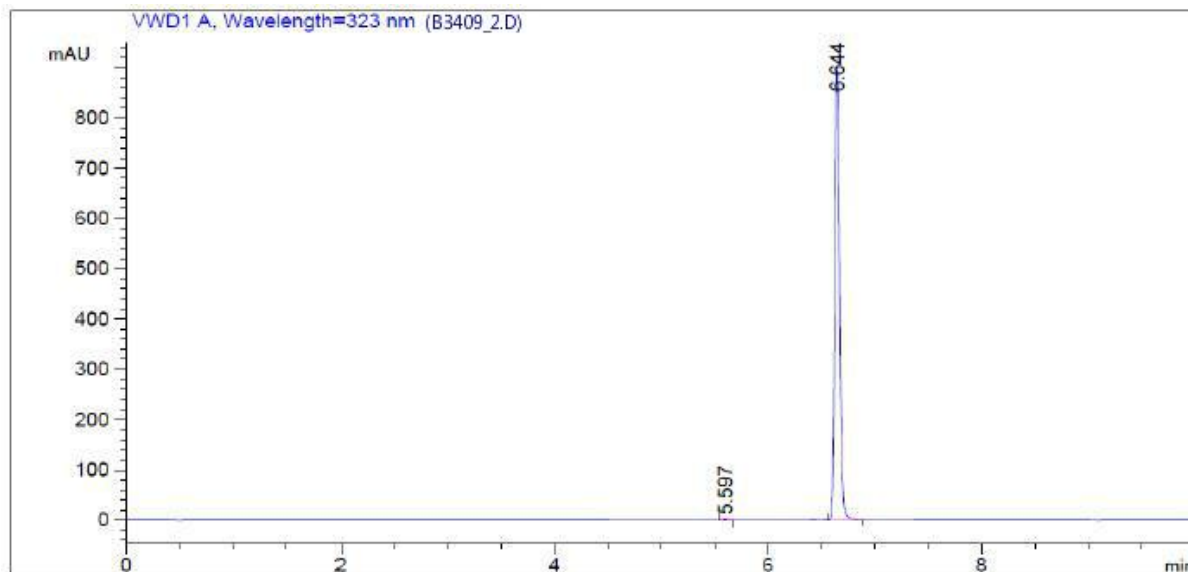
## HPLC Condition

**Column :** Athena C18, 3  $\mu$ m, 2.1mm  $\times$  100 mm  
**Solvent A:** 0.1% H<sub>3</sub>PO<sub>4</sub> in 100% Acetonitrile  
**Solvent B:** 0.1% H<sub>3</sub>PO<sub>4</sub> in 100% Water  
**Gradient:**

Time	A	B
0.0min	0%	100%
2.0min	0%	100%
6.0min	95%	5%
7.0min	95%	5%
8.0min	0%	100%
8.0min	Stop	Stop

**Flow rate:** 0.4ml/min  
**Wavelength:** 323nm  
**Volume:** 10 $\mu$ l

# Result



Rank	RetTime(min)	Area(mAU*s)	Area %
1	5.597	4.07498	0.1446
2	6.644	2814.13110	99.8554

## Caution

**FOR RESEARCH PURPOSES ONLY.**

**NOT FOR HUMAN, VETERINARY DIAGNOSTIC OR THERAPEUTIC USE.**

**APExBIO Technology**

**[www.apexbt.com](http://www.apexbt.com)**

7505 Fannin street, Suite 410, Houston, TX 77054.

Tel: +1-832-696-8203 | Fax: +1-832-641-3177 | Email: [info@apexbt.com](mailto:info@apexbt.com)