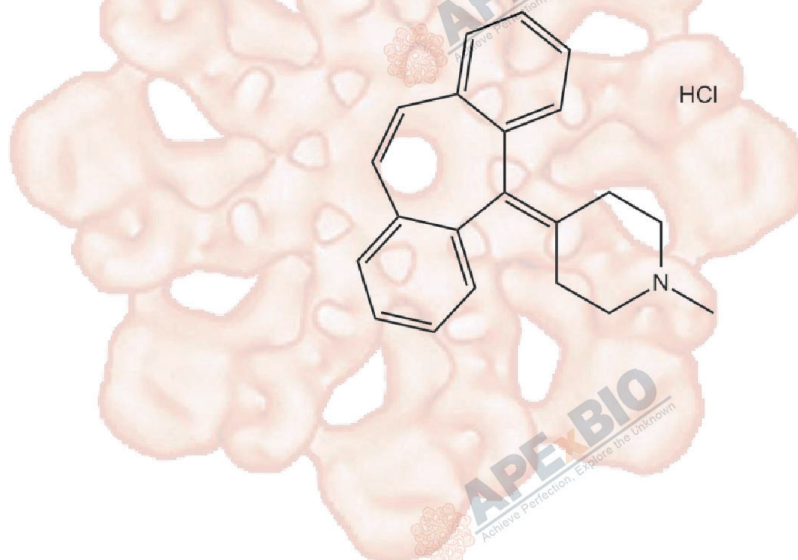


# Product Data Sheet

## Cyproheptadine hydrochloride

**Cat. No.:** B3309  
**CAS No.:** 969-33-5  
**Formula:** C<sub>21</sub>H<sub>22</sub>ClN  
**M.Wt:** 323.86  
**Synonyms:**  
**Target:** Neuroscience  
**Pathway:** Histamine Receptor  
**Storage:** Desiccate at -20°C



### Solvent & Solubility

insoluble in H<sub>2</sub>O; ≥32.39 mg/mL in DMSO; ≥12.14 mg/mL in EtOH

In Vitro

Preparing Stock Solutions	Solvent	Mass		
		1mg	5mg	10mg
	<b>Concentration</b>			
	<b>1 mM</b>	3.0878 mL	15.4388 mL	30.8775 mL
	<b>5 mM</b>	0.6176 mL	3.0878 mL	6.1755 mL
	<b>10 mM</b>	0.3088 mL	1.5439 mL	3.0878 mL

Please refer to the solubility information to select the appropriate solvent

### Biological Activity

Shortsummary

serotonin and histamine antagonist as well as antimuscarinic reagent

IC<sub>50</sub> & Target

In Vitro

#### Cell Viability Assay

Preparation method:

In Vivo

#### Animal experiment

Applications:

### Product Citations

See more customer validations on [www.apexbt.com](http://www.apexbt.com).

## References

## Caution

**FOR RESEARCH PURPOSES ONLY.**

**NOT FOR HUMAN, VETERINARY DIAGNOSTIC OR THERAPEUTIC USE.**

*Specific storage and handling information for each product is indicated on the product datasheet. Most APExBIO products are stable under the recommended conditions. Products are sometimes shipped at a temperature that differs from the recommended storage temperature. Shortterm storage of many products are stable in the short-term at temperatures that differ from that required for long-term storage. We ensure that the product is shipped under conditions that will maintain the quality of the reagents. Upon receipt of the product, follow the storage recommendations on the product data sheet.*

**APExBIO Technology**

**[www.apexbt.com](http://www.apexbt.com)**

7505 Fannin street, Suite 410, Houston, TX 77054.

Tel: +1-832-696-8203 | Fax: +1-832-641-3177 | Email: [info@apexbt.com](mailto:info@apexbt.com)