

Certificate of Analysis

Product Name: Kif15-IN-1

Cat. No.: B3280

Batch No.: 1

Physical and Chemical Properties

Batch Molecular Formula: C₂₀H₂₂N₄O₅S

Batch Molecular Weight: 430.48

Purity: >98%

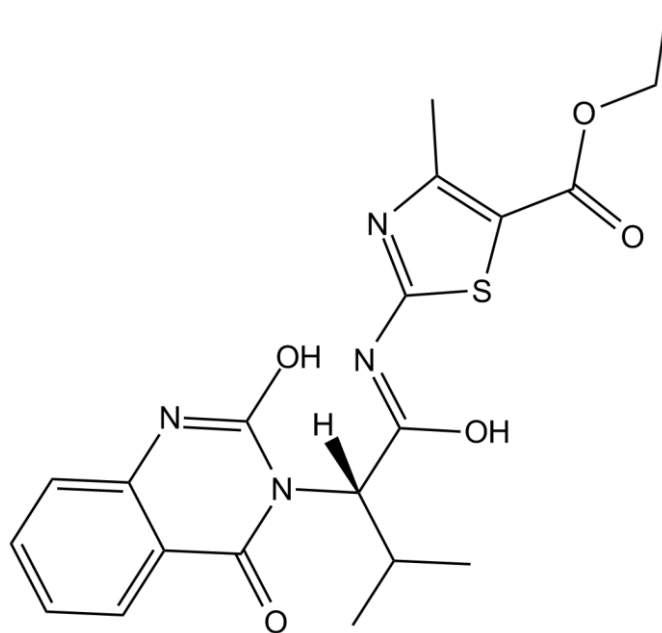
Cas No.: 672926-32-8

Analytical Data

HPLC: Shows Min 98% purity

Mass Spectrum: Consistent with structure

Structure



Caution

FOR RESEARCH PURPOSES ONLY.

NOT FOR HUMAN, VETERINARY DIAGNOSTIC OR THERAPEUTIC USE.

APEX BIO Technology

www.apexbt.com

7505 Fannin Street, Suite 410, Houston, TX 77054.

Tel: +1-832-696-8203 | Fax: +1-832-641-3177 | Email: info@apexbt.com