

## Certificate of Analysis

Product Name: CEP-37440

Cat. No.: B3271

Batch No.: 2

### Physical and Chemical Properties

Batch Molecular Formula: C<sub>30</sub>H<sub>38</sub>CIN<sub>7</sub>O<sub>3</sub>

Batch Molecular Weight: 580.12

Purity: >98%

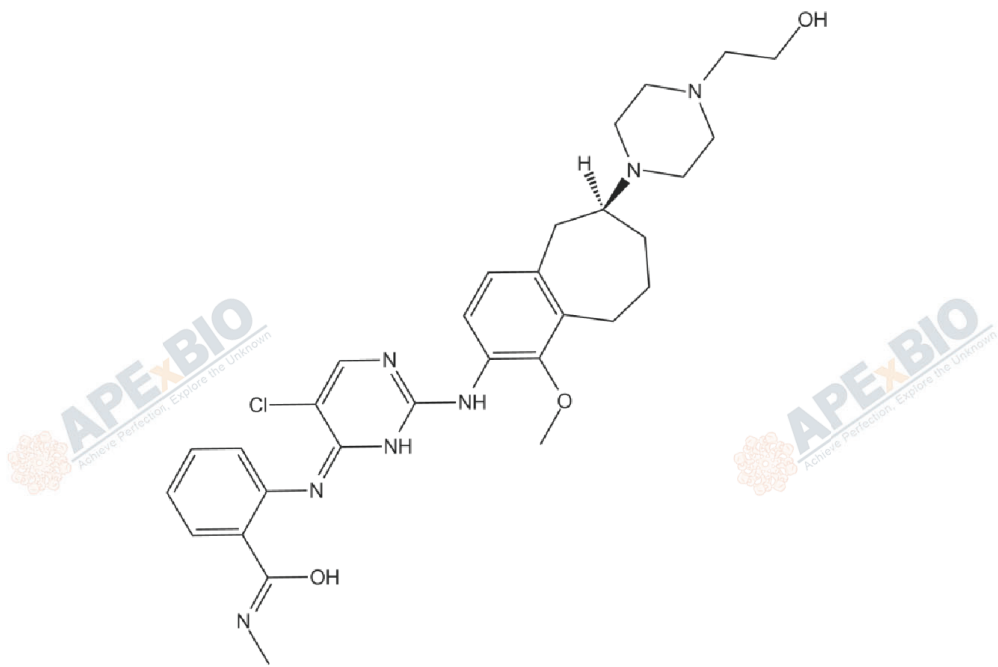
Cas No.: 1391712-60-9

### Analytical Data

HPLC: HPLC

Mass Spectrum: Consistent with structure

### Structure



## Caution

**FOR RESEARCH PURPOSES ONLY.**

**NOT FOR HUMAN, VETERINARY DIAGNOSTIC OR THERAPEUTIC USE.**

**APExBIO Technology**

**[www.apexbt.com](http://www.apexbt.com)**

7505 Fannin street, Suite 410, Houston, TX 77054.

Tel: +1-832-696-8203 | Fax: +1-832-641-3177 | Email: [info@apexbt.com](mailto:info@apexbt.com)