

High Performance Liquid Chromatography

Analysis Information

Product Name: Beta-Lapachone
Operator: David
Injection Date: 6/25/2021 3:19:48 PM
Batch No.: 3

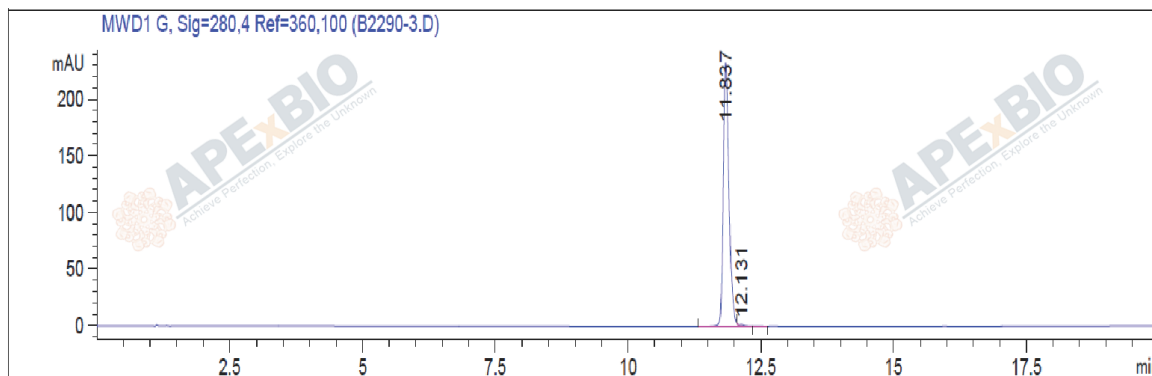
HPLC Condition

Column : ZORBAX Eclipse Pluse C18 3.5 μ m 4.6mmx100mm
Solvent A: H2O+0.1%TFA
Solvent B: ACN+0.1%TFA
Gradient:

| Time | A | B |
|---------|------|------|
| 0.0min | 80% | 20% |
| 2.0min | 80% | 20% |
| 16.0min | 20% | 80% |
| 17.0min | 0% | 100% |
| 20.0min | 0% | 100% |
| 23.0min | Stop | Stop |

Flow rate: 1ml/min
Wavelength: 280nm
Volume: 5 μ l

Result



| Rank | RetTime(min) | Area(mAU*s) | Area % |
|------|--------------|-------------|---------|
| 1 | 11.837 | 1717.48743 | 99.4292 |
| 2 | 12.131 | 9.85991 | 0.5708 |

Caution

FOR RESEARCH PURPOSES ONLY.

NOT FOR HUMAN, VETERINARY DIAGNOSTIC OR THERAPEUTIC USE.

APEX BIO Technology

www.apexbt.com

7505 Fannin street, Suite 410, Houston, TX 77054.

Tel: +1-832-696-8203 | Fax: +1-832-641-3177 | Email: info@apexbt.com