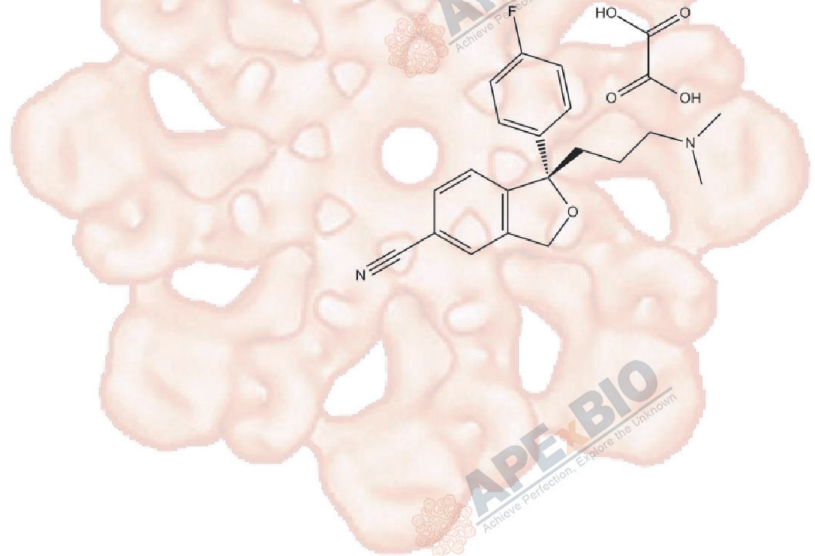


Product Data Sheet

Escitalopram Oxalate

Cat. No.:	B2238
CAS No.:	219861-08-2
Formula:	C ₂₂ H ₂₃ FN ₂ O ₅
M.Wt:	414.43
Synonyms:	
Target:	Neuroscience
Pathway:	SSRIs
Storage:	Store at -20°C



Solvent & Solubility

≥10.6 mg/mL in H₂O; ≥2.31 mg/mL in EtOH with ultrasonic; ≥41.45 mg/mL in DMSO

In Vitro	Preparing Stock Solutions	Mass			
		Solvent Concentration	1mg	5mg	10mg
		1 mM	2.4130 mL	12.0648 mL	24.1295 mL
		5 mM	0.4826 mL	2.4130 mL	4.8259 mL
		10 mM	0.2413 mL	1.2065 mL	2.4130 mL

Please refer to the solubility information to select the appropriate solvent

Biological Activity

Shortsummary	Selective 5-HT reuptake inhibitor	
IC ₅₀ & Target		
In Vitro	Cell Viability Assay	
	Preparation method:	
In Vivo	Animal experiment	
	Applications:	

Product Citations

See more customer validations on www.apexbt.com.

References

Caution

FOR RESEARCH PURPOSES ONLY.

NOT FOR HUMAN, VETERINARY DIAGNOSTIC OR THERAPEUTIC USE.

Specific storage and handling information for each product is indicated on the product datasheet. Most APExBIO products are stable under the recommended conditions. Products are sometimes shipped at a temperature that differs from the recommended storage temperature. Shortterm storage of many products are stable in the short-term at temperatures that differ from that required for long-term storage. We ensure that the product is shipped under conditions that will maintain the quality of the reagents. Upon receipt of the product, follow the storage recommendations on the product data sheet.

APExBIO Technology

www.apexbt.com

7505 Fannin street, Suite 410, Houston, TX 77054.

Tel: +1-832-696-8203 | Fax: +1-832-641-3177 | Email: info@apexbt.com