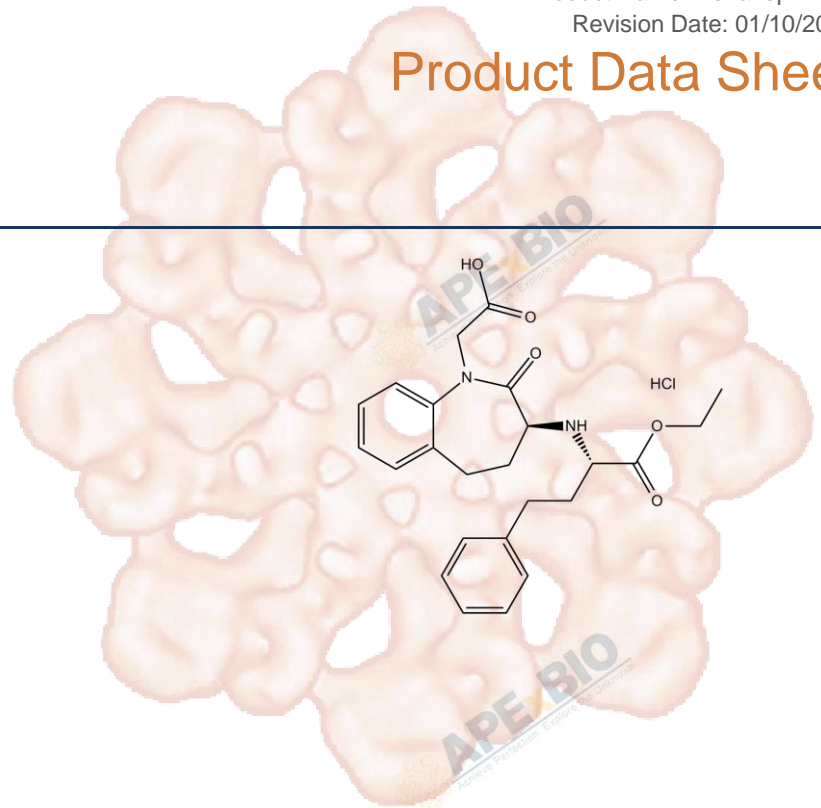


# Product Data Sheet

## Benazepril HCl

<b>Cat. No.:</b>	B2216
<b>CAS No.:</b>	86541-74-4
<b>Formula:</b>	C <sub>24</sub> H <sub>29</sub> CIN <sub>2</sub> O <sub>5</sub>
<b>M.Wt:</b>	460.95
<b>Synonyms:</b>	
<b>Target:</b>	Others
<b>Pathway:</b>	Others
<b>Storage:</b>	Store at -20°C



### Solvent & Solubility

≥18.1 mg/mL in H<sub>2</sub>O with ultrasonic; ≥18.2 mg/mL in DMSO; ≥55.4 mg/mL in EtOH

In Vitro

Preparing Stock Solutions	Solvent	Mass		
		1mg	5mg	10mg
	<b>Concentration</b>			
	<b>1 mM</b>	2.1694 mL	10.8472 mL	21.6943 mL
	<b>5 mM</b>	0.4339 mL	2.1694 mL	4.3389 mL
	<b>10 mM</b>	0.2169 mL	1.0847 mL	2.1694 mL

Please refer to the solubility information to select the appropriate solvent.

### Biological Activity

Shortsummary: angiotensin-converting enzyme (ACE) inhibitor

IC<sub>50</sub> & Target

In Vitro

#### Cell Viability Assay

Preparation method:

In Vivo

#### Animal experiment

Applications:

### Product Citations

See more customer validations on [www.apexbt.com](http://www.apexbt.com).

## References

## Caution

**FOR RESEARCH PURPOSES ONLY.**

**NOT FOR HUMAN, VETERINARY DIAGNOSTIC OR THERAPEUTIC USE.**

*Specific storage and handling information for each product is indicated on the product datasheet. Most APEX BIO products are stable under the recommended conditions. Products are sometimes shipped at a temperature that differs from the recommended storage temperature. Shortterm storage of many products are stable in the short-term at temperatures that differ from that required for long-term storage. We ensure that the product is shipped under conditions that will maintain the quality of the reagents. Upon receipt of the product, follow the storage recommendations on the product data sheet.*

**APEX BIO Technology**

**[www.apexbt.com](http://www.apexbt.com)**

7505 Fannin street, Suite 410, Houston, TX 77054.

Tel: +1-832-696-8203 | Fax: +1-832-641-3177 | Email: [info@apexbt.com](mailto:info@apexbt.com)

