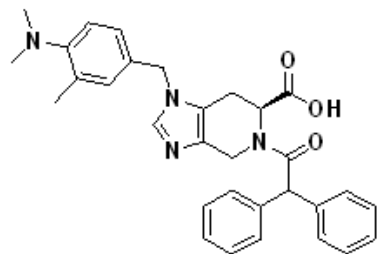
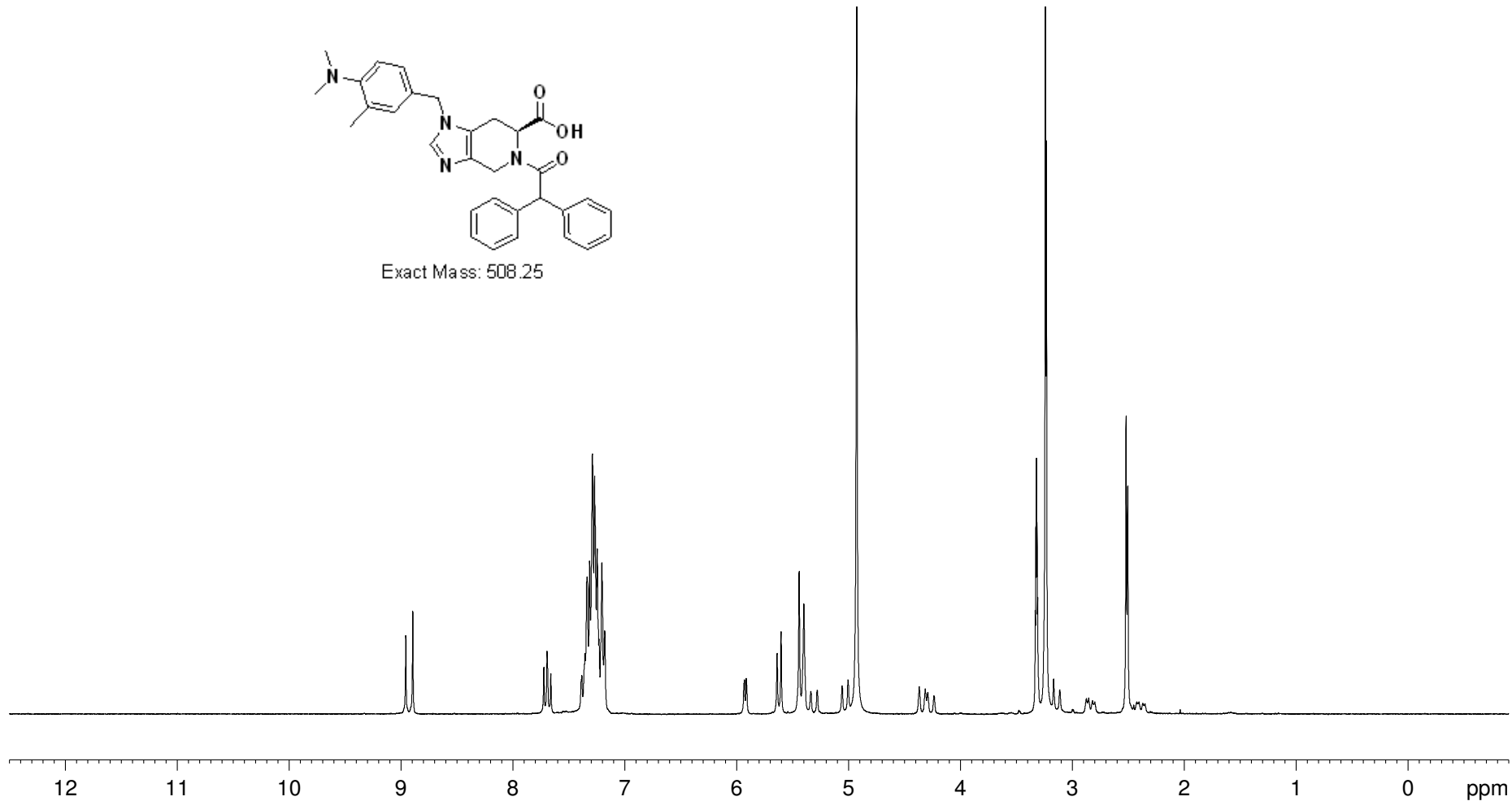


8.959  
8.897  
7.725  
7.697  
7.662  
7.529  
7.386  
7.357  
7.340  
7.336  
7.317  
7.291  
7.271  
7.247  
7.232  
7.206  
7.181  
5.932  
5.916  
5.640  
5.604  
5.443  
5.401  
5.340  
5.283  
5.059  
5.006  
4.929  
4.369  
4.316  
4.293  
4.237  
3.479  
3.333  
3.327  
3.322  
3.317  
3.311  
3.243  
3.233  
3.168  
3.113  
2.999  
2.991  
2.876  
2.855  
2.822  
2.800  
2.521  
2.506  
2.452  
2.426  
2.405



Exact Mass: 508.25



1.020  
12.097  
4.404  
0.961  
6.140  
0.609  
2.948  
0.529