

High Performance Liquid Chromatography

Analysis Information

Product Name: MRS 2578
Operator: David
Injection Date: 5/10/2019 2:50:16 PM
Batch No.: 2

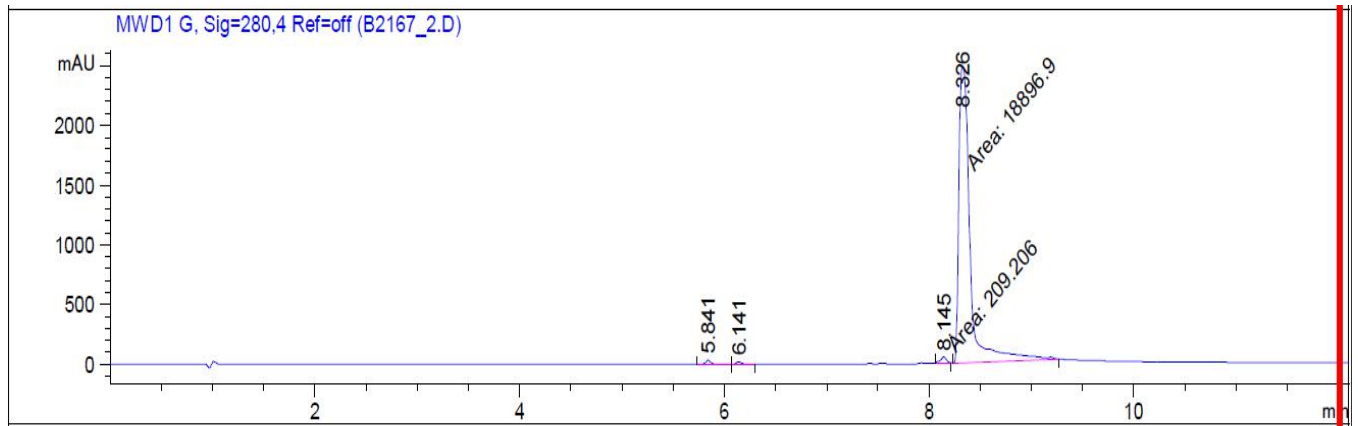
HPLC Condition

Column : ZORBAX Eclipse Pluse C18 3.5 μ m 4.6mmx100mm
Solvent A: H2O+0.1%TFA
Solvent B: ACN+0.1%TFA
Gradient:

Time	A	B
0.0min	80%	20%
2.0min	80%	20%
7.0min	5%	95%
10.00min	0%	100%
12.00min	0%	100%
12.10min	80%	20%
15.00min	Stop	Stop

Flow rate: 1mL/min
Wavelength: 280nm
Volume: 1 μ l

Result



Rank	RetTime(min)	Area(mAU*s)	Area %
1	5.841	105.62538	0.5480
2	6.141	62.50613	0.3243
3	8.145	209.20612	1.0854
4	8.326	1.88969e4	98.0423

Caution

FOR RESEARCH PURPOSES ONLY.

NOT FOR HUMAN, VETERINARY DIAGNOSTIC OR THERAPEUTIC USE.

APEX BIO Technology

www.apexbt.com

7505 Fannin street, Suite 410, Houston, TX 77054.

Tel: +1-832-696-8203 | Fax: +1-832-641-3177 | Email: info@apexbt.com