

High Performance Liquid Chromatography

Analysis Information

Product Name: Pizotifen Malate
Operator: David
Injection Date: 5/29/2020 3:08:16 AM
Batch No.: 2

HPLC Condition

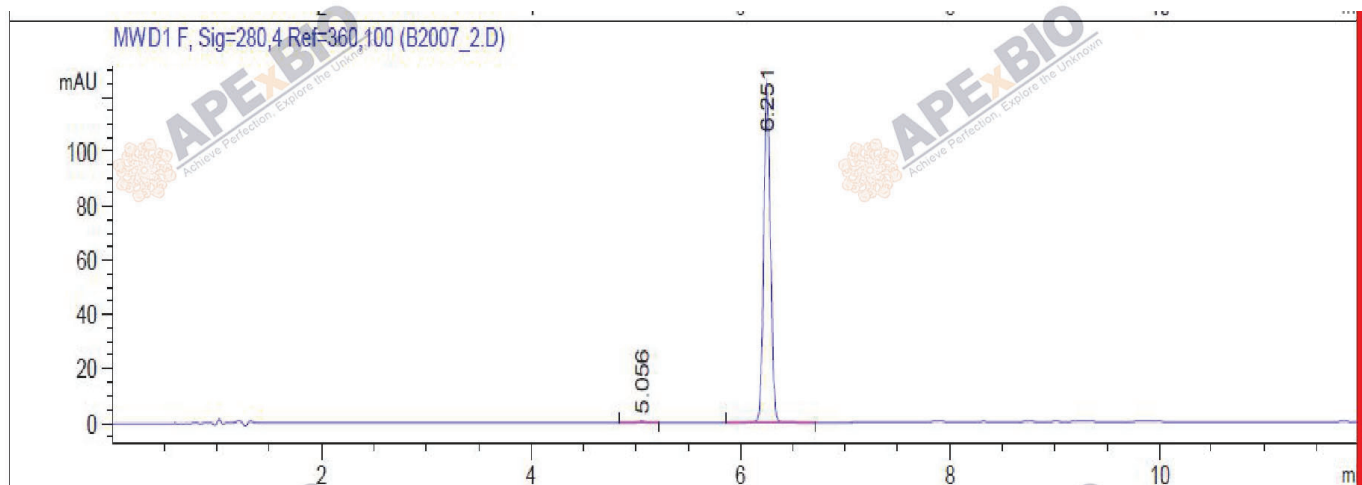
Column : ZORBAX Eclipse Pluse C18 3.5 μ m 4.6mmx100mm
Solvent A: H2O+0.1%TFA
Solvent B: ACN+0.1%TFA

Gradient:

| Time | A | B |
|----------|------|------|
| 0.0min | 80% | 20% |
| 2.0min | 80% | 20% |
| 7.0min | 5% | 95% |
| 10.00min | 0% | 100% |
| 12.00min | 0% | 100% |
| 15.00min | Stop | Stop |

Flow rate: 1mL/min
Wavelength: 280nm
Volume: 5 μ l

Result



| Rank | RetTime(min) | Area(mAU*s) | Area % |
|------|--------------|-------------|---------|
| 1 | 5.056 | 3.02091 | 0.5245 |
| 2 | 6.251 | 572.90308 | 99.4755 |

Caution

FOR RESEARCH PURPOSES ONLY.

NOT FOR HUMAN, VETERINARY DIAGNOSTIC OR THERAPEUTIC USE.

APEX BIO Technology

www.apexbt.com

7505 Fannin street, Suite 410, Houston, TX 77054.

Tel: +1-832-696-8203 | Fax: +1-832-641-3177 | Email: info@apexbt.com