

# High Performance Liquid Chromatography

## Analysis Information

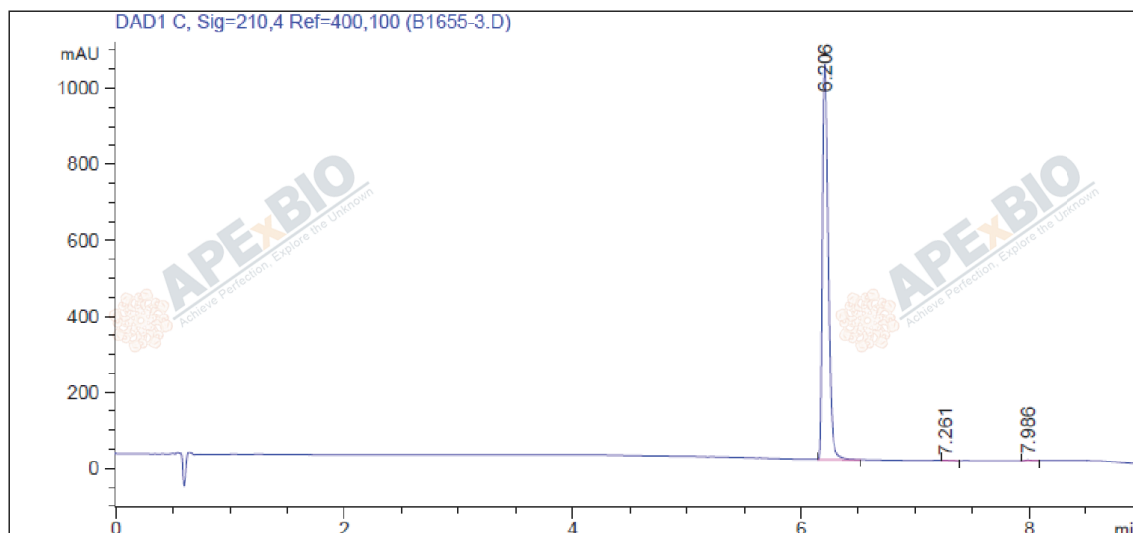
**Product Name:** Alverine Citrate  
**Operator:** David  
**Injection Date:** 12/9/2021 2:54:35 PM  
**Batch No.:** 3

## HPLC Condition

**Column :** Athena C18, 3  $\mu$ m, 2.1mm  $\times$  100 mm  
**Solvent A:** ACN+0.1%TFA  
**Solvent B:** H2O+0.1%TFA  
**Gradient:**

Time	A	B
0.0min	0%	100%
1.5min	0%	100%
6.0min	95%	5%
9.0min	95%	5%
9.0min	Stop	Stop

**Flow rate:** 0.46ml/min  
**Wavelength:** 210nm  
**Volume:** 3 $\mu$ l



Rank	RetTime(min)	Area(mAU*s)	Area %
1	6.206	3785.03516	99.7066
2	7.261	5.06401	0.1334
3	7.986	6.07400	0.1600

## Caution

**FOR RESEARCH PURPOSES ONLY.**

**NOT FOR HUMAN, VETERINARY DIAGNOSTIC OR THERAPEUTIC USE.**

**APEX BIO Technology**

[www.apexbt.com](http://www.apexbt.com)

7505 Fannin street, Suite 410, Houston, TX 77054.

Tel: +1-832-696-8203 | Fax: +1-832-641-3177 | Email: [info@apexbt.com](mailto:info@apexbt.com)