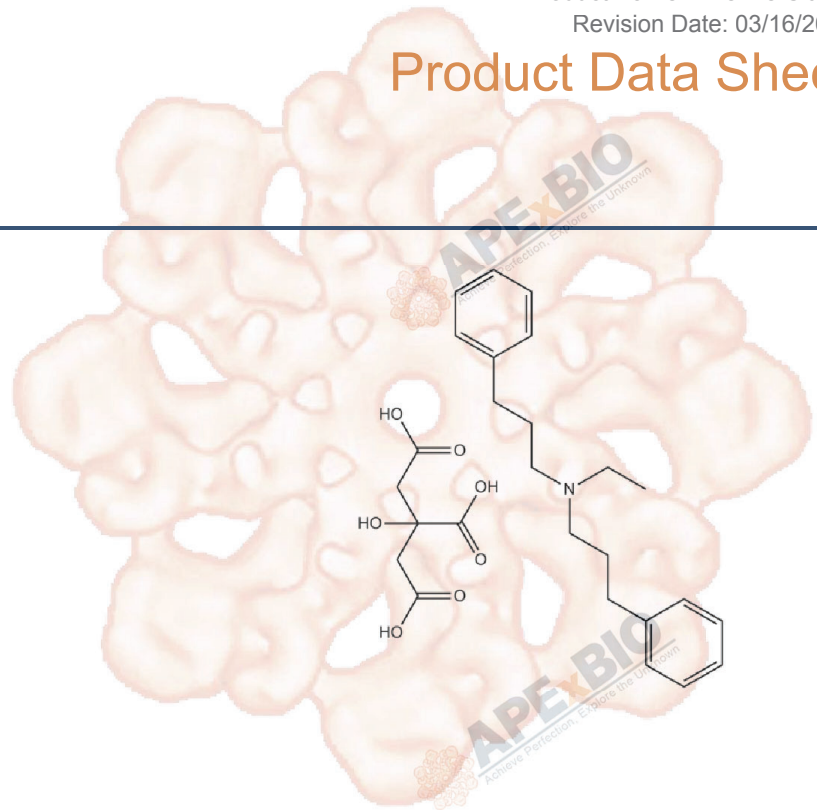


Product Data Sheet

Alverine Citrate

Cat. No.: B1655
CAS No.: 5560-59-8
Formula: C₂₀H₂₇N·C₆H₈O₇
M.Wt: 473.56
Synonyms:
Target:
Pathway:
Storage: Store at -20°C



Solvent & Solubility

≥23.68 mg/mL in DMSO; ≥2.71 mg/mL in H₂O with ultrasonic; ≥2.76 mg/mL in EtOH with ultrasonic

In Vitro	Preparing Stock Solutions	Mass			
		Solvent Concentration	1mg	5mg	10mg
		1 mM	2.1117 mL	10.5583 mL	21.1166 mL
		5 mM	0.4223 mL	2.1117 mL	4.2233 mL
		10 mM	0.2112 mL	1.0558 mL	2.1117 mL

Please refer to the solubility information to select the appropriate solvent.

Biological Activity

Shortsummary	Drug used for functional gastrointestinal disorders	
IC ₅₀ & Target		
In Vitro	Cell Viability Assay	
	Preparation method:	
In Vivo	Animal experiment	
	Applications:	

Product Citations

See more customer validations on www.apexbt.com.

References

Caution

FOR RESEARCH PURPOSES ONLY.

NOT FOR HUMAN, VETERINARY DIAGNOSTIC OR THERAPEUTIC USE.

Specific storage and handling information for each product is indicated on the product datasheet. Most APExBIO products are stable under the recommended conditions. Products are sometimes shipped at a temperature that differs from the recommended storage temperature. Short-term storage of many products are stable in the short-term at temperatures that differ from that required for long-term storage. We ensure that the product is shipped under conditions that will maintain the quality of the reagents. Upon receipt of the product, follow the storage recommendations on the product data sheet.

APExBIO Technology

www.apexbt.com

7505 Fannin street, Suite 410, Houston, TX 77054.

Tel: +1-832-696-8203 | Fax: +1-832-641-3177 | Email: info@apexbt.com

