

# High Performance Liquid Chromatography

## Analysis Information

**Product Name:** JSH-23  
**Operator:** David  
**Injection Date:** 4/3/2021 8:15:39 AM  
**Batch No.:** 2

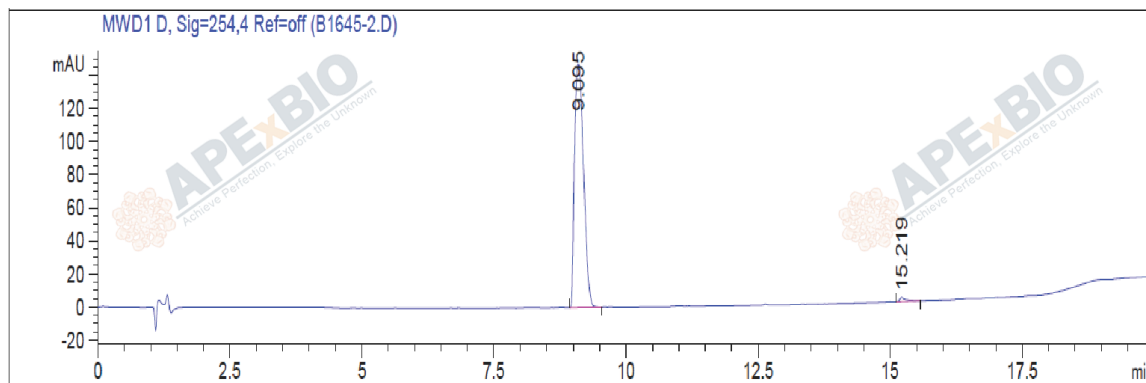
## HPLC Condition

**Column :** ZORBAX Eclipse Pluse C18 3.5 $\mu$ m 4.6mmx100mm  
**Solvent A:** H2O+0.1%TFA  
**Solvent B:** ACN+0.1%TFA  
**Gradient:**

Time	A	B
0.0min	80%	20%
2.0min	80%	20%
16.0min	20%	80%
17.0min	0%	100%
20.0min	0%	100%
23.0min	Stop	Stop

**Flow rate:** 1ml/min  
**Wavelength:** 254nm  
**Volume:** 5 $\mu$ l

## Result



Rank	RetTime(min)	Area(mAU*s)	Area %
1	9.095	1742.88208	98.8611
2	15.219	20.07763	1.1389

## Caution

**FOR RESEARCH PURPOSES ONLY.**

**NOT FOR HUMAN, VETERINARY DIAGNOSTIC OR THERAPEUTIC USE.**

**APEX BIO Technology**

**www.apexbt.com**

7505 Fannin street, Suite 410, Houston, TX 77054.

Tel: +1-832-696-8203 | Fax: +1-832-641-3177 | Email: info@apexbt.com