

1. Analysis Information

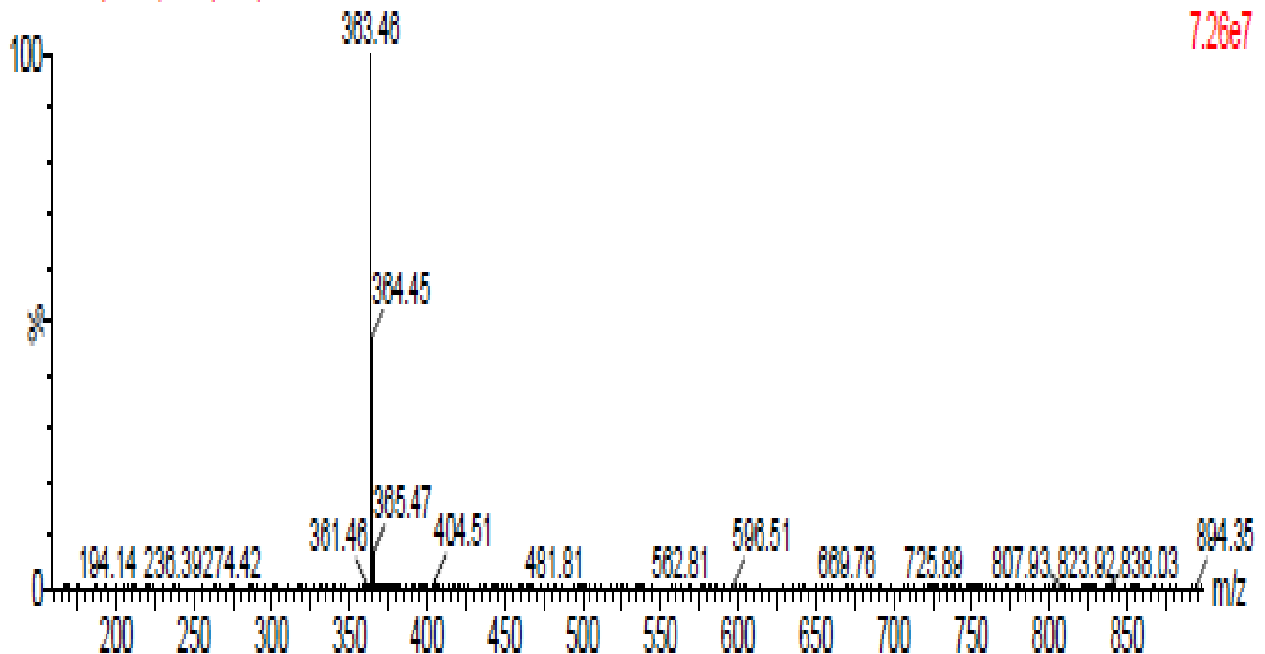
Product Name:	Solifenacin succinate
Operator:	David
Injection Date:	6/27/2016 06:18:33 PM
Inj. Volume:	1
Batch No.:	2

2. Acquisition Parameter

Probe:	ESI
Gas Temp:	350°C
Gas Flow:	11L/min
Nebulizer:	50psi
VCap:	4000v
Fragmentor:	70v
Reference:	m/z 121.050873, 922.009798
T.Flow:	0.3ml/min
B.conc:	20%H ₂ O/80%ACN

3. Result

B1614 10 (0.165) Cm (8:17)



Molecular Weight:	480.55
m/z(M-2H) Base Peak :	363.46
m/z(M-H) Base Peak :	364.45