

# High Performance Liquid Chromatography

## Analysis Information

**Product Name:** Homatropine Bromide  
**Operator:** David  
**Injection Date:** 4/15/2019 4:51:56 PM  
**Batch No.:** 2

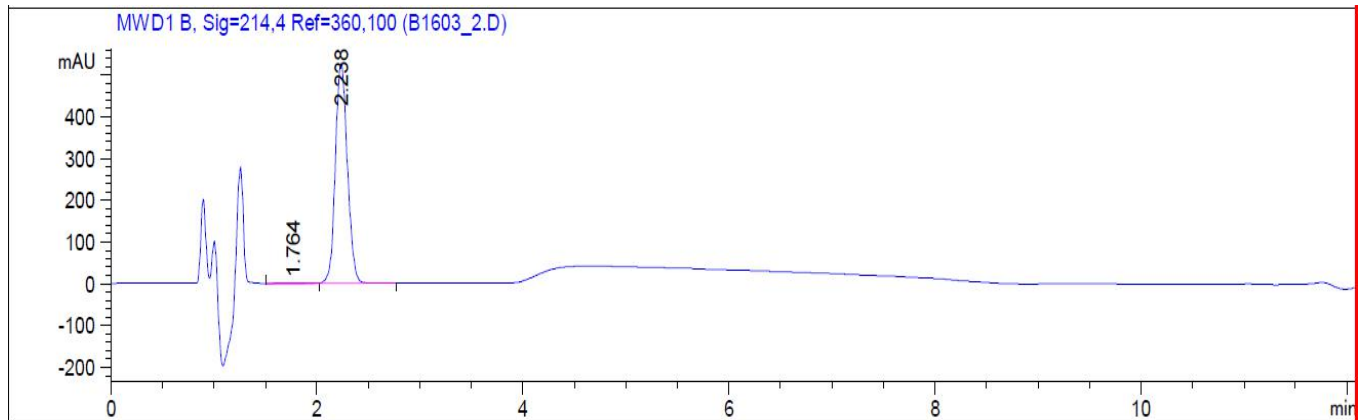
## HPLC Condition

**Column :** ZORBAX Eclipse Pluse C18 3.5 $\mu$ m 4.6mmx100mm  
**Solvent A:** H2O+0.1%TFA  
**Solvent B:** ACN+0.1%TFA  
**Gradient:**

| Time     | A    | B    |
|----------|------|------|
| 0.0min   | 80%  | 20%  |
| 2.0min   | 80%  | 20%  |
| 7.0min   | 5%   | 95%  |
| 10.00min | 0%   | 100% |
| 12.00min | 0%   | 100% |
| 12.10min | 80%  | 20%  |
| 15.00min | Stop | Stop |

**Flow rate:** 1mL/min  
**Wavelength:** 214nm  
**Volume:** 3 $\mu$ l

## Result



| Rank | RetTime(min) | Area(mAU*s) | Area %  |
|------|--------------|-------------|---------|
| 1    | 1.764        | 15.36976    | 0.3587  |
| 2    | 2.238        | 4269.27783  | 99.6413 |

## Caution

**FOR RESEARCH PURPOSES ONLY.**

**NOT FOR HUMAN, VETERINARY DIAGNOSTIC OR THERAPEUTIC USE.**

**APEX BIO Technology**

**[www.apexbt.com](http://www.apexbt.com)**

7505 Fannin street, Suite 410, Houston, TX 77054.

Tel: +1-832-696-8203 | Fax: +1-832-641-3177 | Email: [info@apexbt.com](mailto:info@apexbt.com)