

7.53
7.51
7.51
7.50
7.50
7.14
7.06

4.85

4.33

3.93

3.85

3.31

3.05

2.77

2.76

2.75

2.74

2.73

2.72

2.11

2.07

2.03

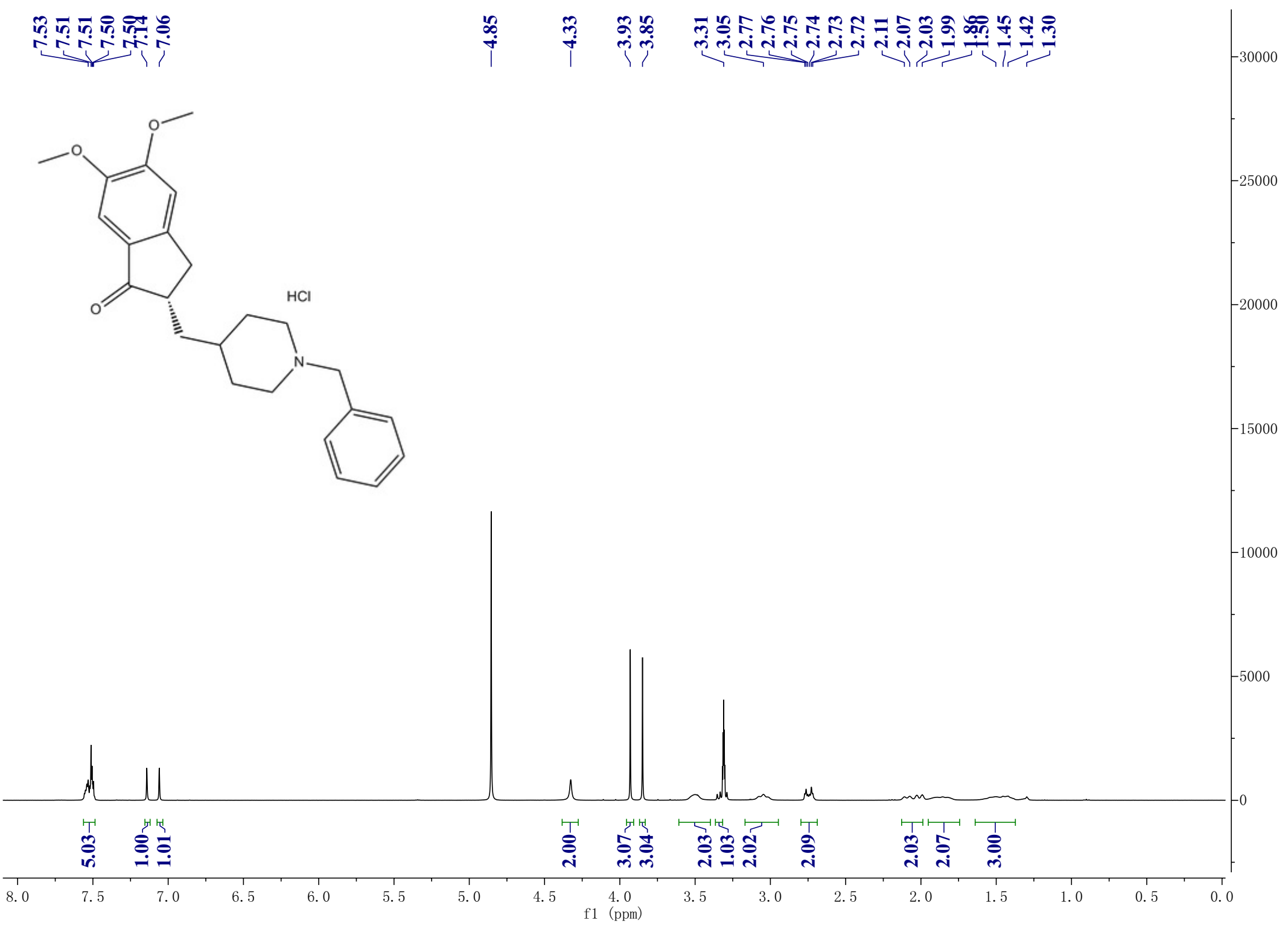
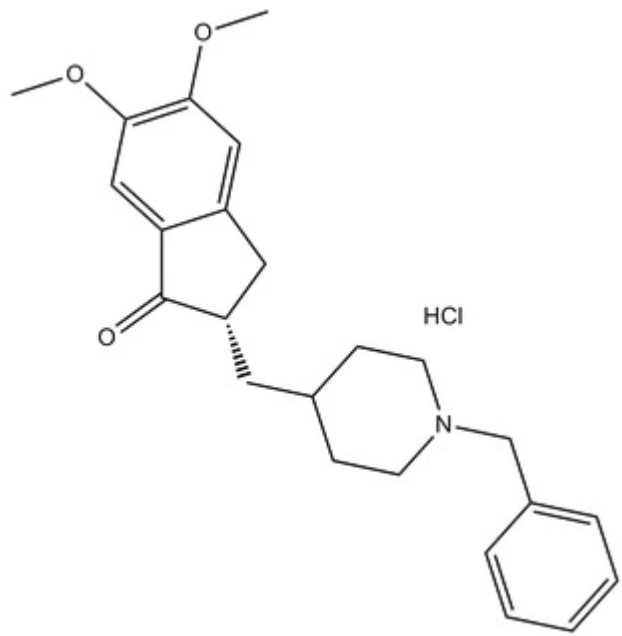
1.99

1.86

1.45

1.42

1.30



5.03

1.00
1.01

2.00

3.07
3.04

2.03
1.03
2.02

2.09

2.03
2.07

3.00

f1 (ppm)