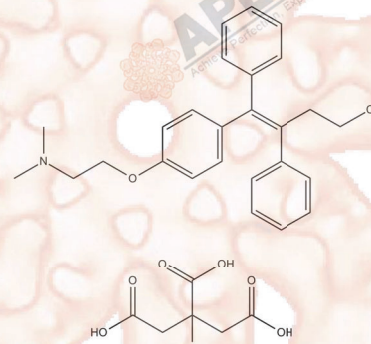


# Product Data Sheet

## Toremifene Citrate

<b>Cat. No.:</b>	B1513
<b>CAS No.:</b>	89778-27-8
<b>Formula:</b>	C32H36ClNO8
<b>M.Wt:</b>	598.08
<b>Synonyms:</b>	
<b>Target:</b>	Endocrinology and Hormones
<b>Pathway:</b>	Estrogen/progestogen Receptor
<b>Storage:</b>	Store at -20°C



### Solvent & Solubility

≥ 24.15mg/mL in DMSO

In Vitro

Preparing Stock Solutions	Solvent Concentration	Mass		
		1mg	5mg	10mg
	1 mM	1.6720 mL	8.3601 mL	16.7202 mL
	5 mM	0.3344 mL	1.6720 mL	3.3440 mL
	10 mM	0.1672 mL	0.8360 mL	1.6720 mL

Please refer to the solubility information to select the appropriate solvent.

### Biological Activity

Shortsummary Oral selective estrogen receptor modulator (SERM)

IC<sub>50</sub> & Target

In Vitro

#### Cell Viability Assay

Preparation method:

In Vivo

#### Animal experiment

Applications:

### Product Citations

See more customer validations on [www.apexbt.com](http://www.apexbt.com).

## References

## Caution

**FOR RESEARCH PURPOSES ONLY.**

**NOT FOR HUMAN, VETERINARY DIAGNOSTIC OR THERAPEUTIC USE.**

*Specific storage and handling information for each product is indicated on the product datasheet. Most APEX BIO products are stable under the recommended conditions. Products are sometimes shipped at a temperature that differs from the recommended storage temperature. Short-term storage of many products are stable in the short-term at temperatures that differ from that required for long-term storage. We ensure that the product is shipped under conditions that will maintain the quality of the reagents. Upon receipt of the product, follow the storage recommendations on the product data sheet.*

**APEX BIO Technology**

**[www.apexbt.com](http://www.apexbt.com)**

7505 Fannin street, Suite 410, Houston, TX 77054.

Tel: +1-832-696-8203 | Fax: +1-832-641-3177 | Email: [info@apexbt.com](mailto:info@apexbt.com)

