

Mass Spectrometry

Analysis Information

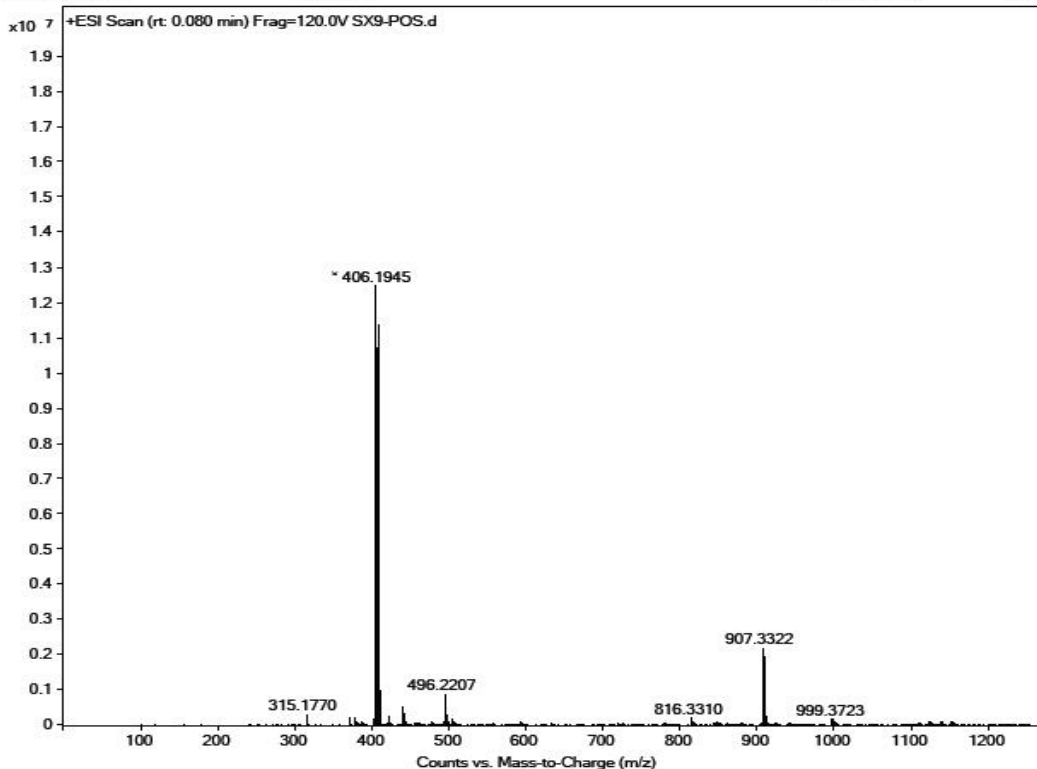
Product Name: Clomiphene citrate
Operator: David
Injection Date: 4/11/2019 12:04:46 PM
Inj. Volume: 1
Batch No.: 2

Acquisition Parameter

Probe: ESI
Gas Temp: 350°C
Gas Flow: 11L/min
Nebulizer: 50psi
VCap: 4000v
Fragmentor: 70v
Reference: m/z 121.050873, 922.009798
T.Flow: 0.3ml/min
B.conc: 20%H₂O/80%ACN

Result

Sample Name	F 5	Position	P2-B9	Instrument Name	Instrument 1
User Name		Inj Vol	Unknown / Injection Program	InjPosition	
Sample Type	Sample	IRM Calibration Status	Success	Data Filename	SX9-POS.d
ACQ Method	20190215-HPLC-POS.m	Comment		Acquired Time	4/11/2019 12:04:46 PM (UTC+08:00)



Molecular Weight: 598.08

m/z([M-6C8H7O]- Base Peak: 406.1945

Caution

FOR RESEARCH PURPOSES ONLY.

NOT FOR HUMAN, VETERINARY DIAGNOSTIC OR THERAPEUTIC USE.

APExBIO Technology

www.apexbt.com

7505 Fannin street, Suite 410, Houston, TX 77054.

Tel: +1-832-696-8203 | Fax: +1-832-641-3177 | Email: info@apexbt.com