



High Performance Liquid Chromatography

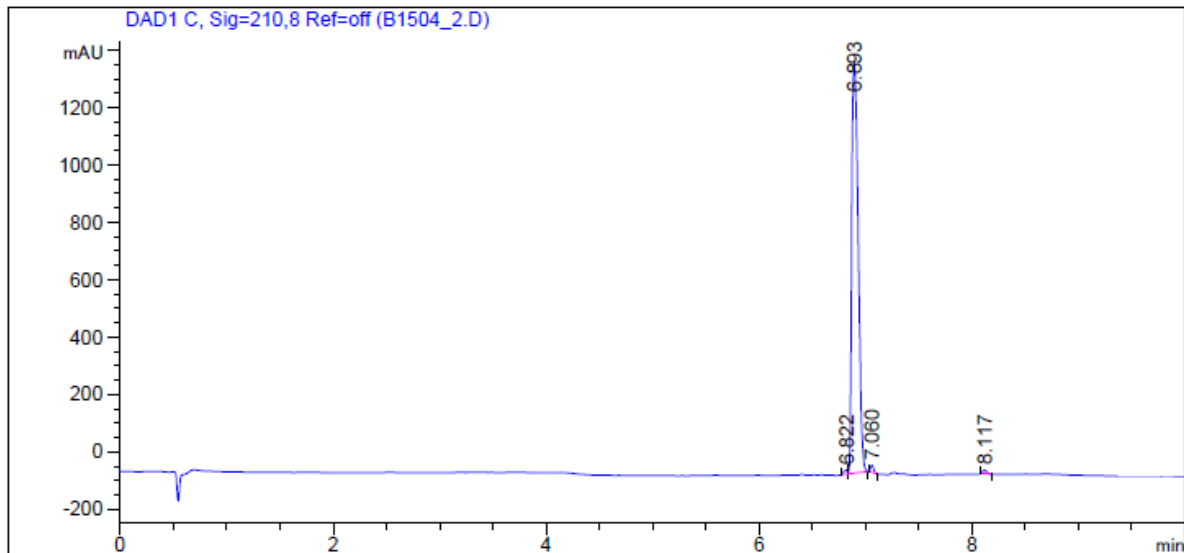
1. Analysis Information

Product Name:	Clomiphene citrate
Operator:	David
Injection Date:	7/17/2016 5:43:54 PM
Batch No.:	2

2. HPLC Condition

Column:	Athena C18, 3 μ m, 2.1mm \times 100 mm																			
Solvent A:	0.1% H3PO4 in 100% Acetonitrile																			
Solvent B:	0.1% H3PO4 in 100% Water																			
Gradient:	<table border="1"><thead><tr><th>Time</th><th>A</th><th>B</th></tr></thead><tbody><tr><td>0.0min</td><td>0%</td><td>100%</td></tr><tr><td>2.0min</td><td>0%</td><td>100%</td></tr><tr><td>7.0min</td><td>95%</td><td>5%</td></tr><tr><td>10.0min</td><td>95%</td><td>5%</td></tr><tr><td>10.0min</td><td>Stop</td><td>Stop</td></tr></tbody></table>		Time	A	B	0.0min	0%	100%	2.0min	0%	100%	7.0min	95%	5%	10.0min	95%	5%	10.0min	Stop	Stop
Time	A	B																		
0.0min	0%	100%																		
2.0min	0%	100%																		
7.0min	95%	5%																		
10.0min	95%	5%																		
10.0min	Stop	Stop																		
Flow rate:	0.4ml/min																			
Wavelength:	210nm																			
Volume:	10 μ l																			

3. Result



Rank	RetTime(min)	Area(mAU*s)	Area %
1	6.822	36.81506	0.6034
2	6.893	5984.47656	98.0885
3	7.060	49.51147	0.8115
4	8.117	30.29334	0.4965