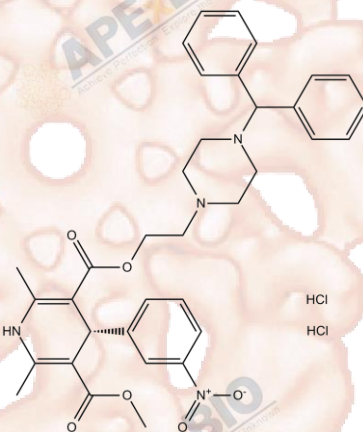


## Product Data Sheet

### Manidipine 2HCl

<b>Cat. No.:</b>	B1419
<b>CAS No.:</b>	89226-75-5
<b>Formula:</b>	C <sub>35</sub> H <sub>40</sub> Cl <sub>2</sub> N <sub>4</sub> O <sub>6</sub>
<b>M.Wt:</b>	683.62
<b>Synonyms:</b>	
<b>Target:</b>	Membrane Transporter/Ion Channel
<b>Pathway:</b>	Calcium Channel
<b>Storage:</b>	Store at -20°C



### Solvent & Solubility

insoluble in H<sub>2</sub>O; ≥69 mg/mL in DMSO with gentle warming; ≥69.2 mg/mL in EtOH with gentle warming

In Vitro

	Solvent	Mass		
		1mg	5mg	10mg
Preparing Stock Solutions	Concentration			
	1 mM	1.4628 mL	7.3140 mL	14.6280 mL
	5 mM	0.2926 mL	1.4628 mL	2.9256 mL
	10 mM	0.1463 mL	0.7314 mL	1.4628 mL

Please refer to the solubility information to select the appropriate solvent.

### Biological Activity

Shortsummary

Calcium channel blocker

IC<sub>50</sub> & Target

In Vitro

Cell Viability Assay

Preparation method:

In Vivo

Animal experiment

Applications:

### Product Citations

See more customer validations on [www.apexbt.com](http://www.apexbt.com).

## References

## Caution

**FOR RESEARCH PURPOSES ONLY.**

**NOT FOR HUMAN, VETERINARY DIAGNOSTIC OR THERAPEUTIC USE.**

*Specific storage and handling information for each product is indicated on the product datasheet. Most APExBIO products are stable under the recommended conditions. Products are sometimes shipped at a temperature that differs from the recommended storage temperature. Short-term storage of many products are stable in the short-term at temperatures that differ from that required for long-term storage. We ensure that the product is shipped under conditions that will maintain the quality of the reagents. Upon receipt of the product, follow the storage recommendations on the product data sheet.*

**APExBIO Technology**

**[www.apexbt.com](http://www.apexbt.com)**

7505 Fannin street, Suite 410, Houston, TX 77054.

Tel: +1-832-696-8203 | Fax: +1-832-641-3177 | Email: [info@apexbt.com](mailto:info@apexbt.com)

