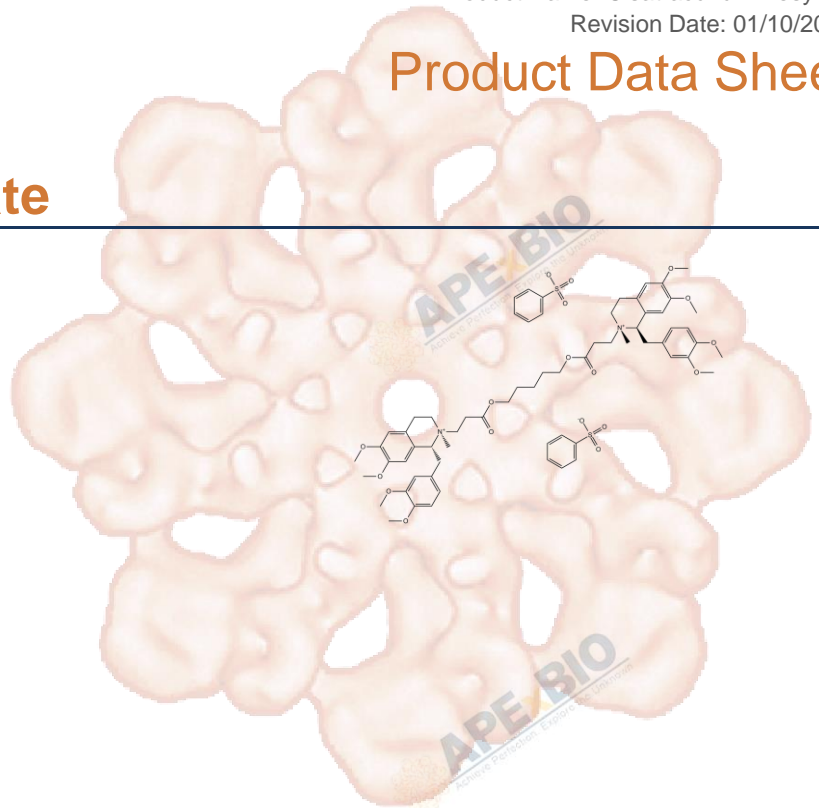


# Product Data Sheet

## Cisatracurium Besylate

**Cat. No.:** B1355  
**CAS No.:** 96946-42-8  
**Formula:** C53H72N2O12·2C6H5O3S  
**M.Wt:** 1243.48  
**Synonyms:**  
**Target:** GPCR/G protein  
**Pathway:** Adrenergic Receptor  
**Storage:** Store at -20°C



### Solvent & Solubility

≥62.17 mg/mL in DMSO; ≥24.7 mg/mL in H<sub>2</sub>O; ≥33 mg/mL in EtOH

In Vitro

Preparing Stock Solutions	Solvent	Mass Concentration	Mass		
			1mg	5mg	10mg
		1 mM	0.8042 mL	4.0210 mL	8.0419 mL
		5 mM	0.1608 mL	0.8042 mL	1.6084 mL
		10 mM	0.0804 mL	0.4021 mL	0.8042 mL

Please refer to the solubility information to select the appropriate solvent.

### Biological Activity

Shortsummary

Neuromuscular-blocking drug

IC<sub>50</sub> & Target

In Vitro

#### Cell Viability Assay

Preparation method:

In Vivo

#### Animal experiment

Applications:

### Product Citations

See more customer validations on [www.apexbt.com](http://www.apexbt.com).

## References

## Caution

**FOR RESEARCH PURPOSES ONLY.**

**NOT FOR HUMAN, VETERINARY DIAGNOSTIC OR THERAPEUTIC USE.**

*Specific storage and handling information for each product is indicated on the product datasheet. Most APEX BIO products are stable under the recommended conditions. Products are sometimes shipped at a temperature that differs from the recommended storage temperature. Shortterm storage of many products are stable in the short-term at temperatures that differ from that required for long-term storage. We ensure that the product is shipped under conditions that will maintain the quality of the reagents. Upon receipt of the product, follow the storage recommendations on the product data sheet.*

**APExBIO Technology**

**[www.apexbt.com](http://www.apexbt.com)**

7505 Fannin street, Suite 410, Houston, TX 77054.

Tel: +1-832-696-8203 | Fax: +1-832-641-3177 | Email: [info@apexbt.com](mailto:info@apexbt.com)

