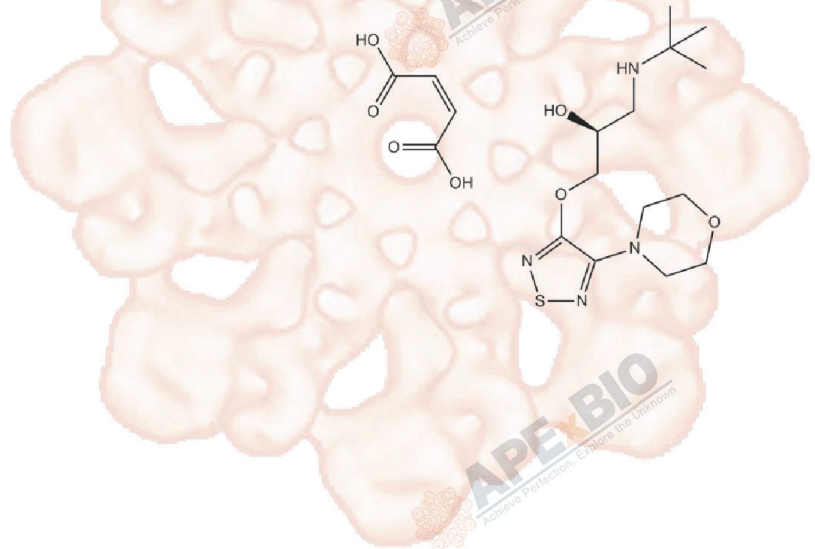


Product Data Sheet

Timolol Maleate

Cat. No.: B1350
CAS No.: 26921-17-5
Formula: C₁₇H₂₈N₄O₇S
M.Wt: 432.49
Synonyms:
Target: GPCR/G protein
Pathway: Adrenergic Receptor
Storage: Store at -20°C



Solvent & Solubility

≥21.62 mg/mL in DMSO; ≥10.53 mg/mL in EtOH; ≥11.83 mg/mL in H₂O

In Vitro

Preparing Stock Solutions	Solvent	Mass	1mg	5mg	10mg
		Concentration			
		1 mM	2.3122 mL	11.5610 mL	23.1219 mL
		5 mM	0.4624 mL	2.3122 mL	4.6244 mL
		10 mM	0.2312 mL	1.1561 mL	2.3122 mL

Please refer to the solubility information to select the appropriate solvent.

Biological Activity

Shortsummary: Non-selective, beta-adrenergic receptor antagonist

IC₅₀ & Target

In Vitro

Cell Viability Assay

Preparation method:

In Vivo

Animal experiment

Applications:

Product Citations

See more customer validations on www.apexbt.com.

References

Caution

FOR RESEARCH PURPOSES ONLY.

NOT FOR HUMAN, VETERINARY DIAGNOSTIC OR THERAPEUTIC USE.

Specific storage and handling information for each product is indicated on the product datasheet. Most APExBIO products are stable under the recommended conditions. Products are sometimes shipped at a temperature that differs from the recommended storage temperature. Shortterm storage of many products are stable in the short-term at temperatures that differ from that required for long-term storage. We ensure that the product is shipped under conditions that will maintain the quality of the reagents. Upon receipt of the product, follow the storage recommendations on the product data sheet.

APExBIO Technology

www.apexbt.com

7505 Fannin street, Suite 410, Houston, TX 77054.

Tel: +1-832-696-8203 | Fax: +1-832-641-3177 | Email: info@apexbt.com

