

# High Performance Liquid Chromatography

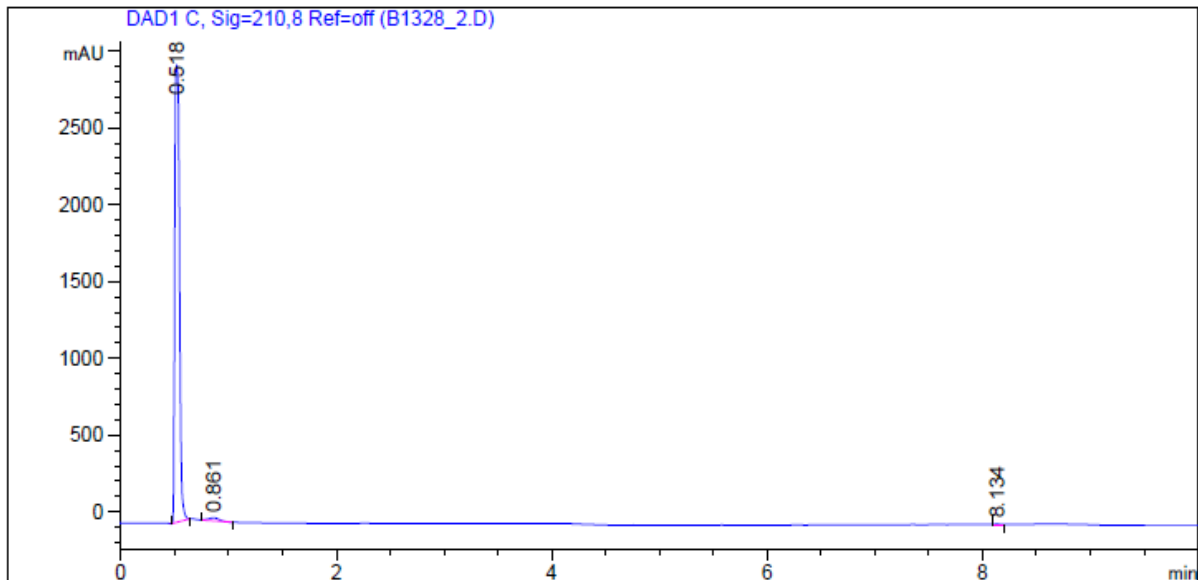
## 1. Analysis Information

Product Name:	Terbutaline Sulfate
Operator:	David
Injection Date:	7/6/2016 10:04:27 PM
Batch No.:	2

## 2. HPLC Condition

Column:	Athena C18, 3 $\mu$ m, 2.1mm $\times$ 100 mm																			
Solvent A:	0.1% H3PO4 in 100% Acetonitrile																			
Solvent B:	0.1% H3PO4 in 100% Water																			
Gradient:	<table border="1"><thead><tr><th>Time</th><th>A</th><th>B</th></tr></thead><tbody><tr><td>0.0min</td><td>0%</td><td>100%</td></tr><tr><td>2.0min</td><td>0%</td><td>100%</td></tr><tr><td>7.0min</td><td>95%</td><td>5%</td></tr><tr><td>10.0min</td><td>95%</td><td>5%</td></tr><tr><td>10.0min</td><td>Stop</td><td>Stop</td></tr></tbody></table>		Time	A	B	0.0min	0%	100%	2.0min	0%	100%	7.0min	95%	5%	10.0min	95%	5%	10.0min	Stop	Stop
Time	A	B																		
0.0min	0%	100%																		
2.0min	0%	100%																		
7.0min	95%	5%																		
10.0min	95%	5%																		
10.0min	Stop	Stop																		
Flow rate:	0.4ml/min																			
Wavelength:	210nm																			
Volume:	10 $\mu$ l																			

## 3. Result



Rank	RetTime(min)	Area(mAU*s)	Area %
1	0.518	9047.33887	98.5335
2	0.861	128.58765	1.4004
3	8.134	6.07010	0.0661