

High Performance Liquid Chromatography

Analysis Information

Product Name: 1-NM-PP1
Operator: David
Injection Date: 3/30/2019 5:29:14 AM
Batch No.: 1

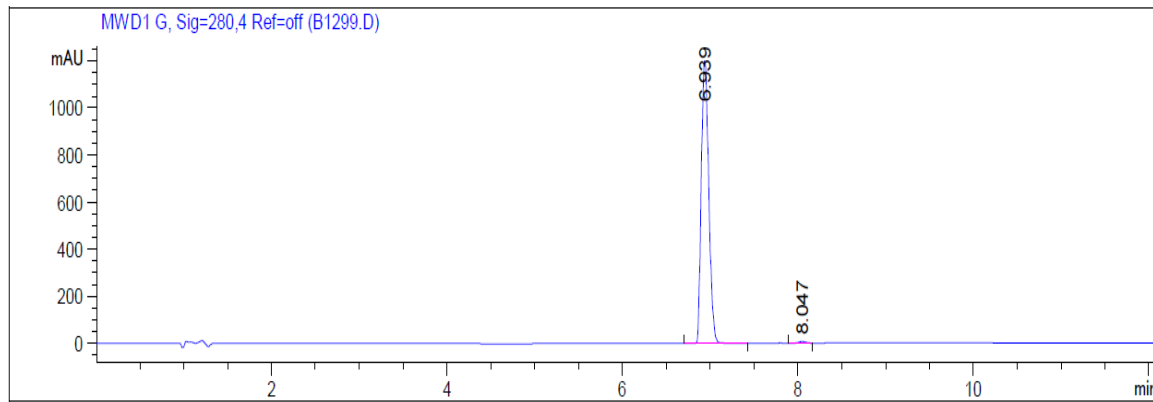
HPLC Condition

Column : ZORBAX Eclipse Pluse C18 3.5 μ m 4.6mmx100mm
Solvent A: H2O+1‰ TFA
Solvent B: ACN+1‰ TFA
Gradient:

Time	A	B
0.0min	80%	20%
2.0min	80%	20%
7.0min	5%	95%
10.0min	0%	100%
12.0min	0%	100%
12.1min	80%	20%
15.0min	Stop	Stop

Flow rate: 1ml/min
Wavelength: 280nm
Volume: 5 μ l

Result



Rank	RetTime(min)	Area(mAU*s)	Area %
1	6.939	7116.60449	99.5005
2	8.047	35.72907	0.4995

Caution

FOR RESEARCH PURPOSES ONLY.

NOT FOR HUMAN, VETERINARY DIAGNOSTIC OR THERAPEUTIC USE.

APExBIO Technology

www.apexbt.com

7505 Fannin street, Suite 410, Houston, TX 77054.

Tel: +1-832-696-8203 | Fax: +1-832-641-3177 | Email: info@apexbt.com