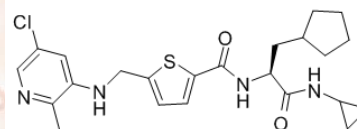


Product Data Sheet

GSK 2830371

Cat. No.:	B1169
CAS No.:	1404456-53-6
Formula:	C23H29ClN4O2S
M.Wt:	461.02
Synonyms:	
Target:	Metabolism
Pathway:	Phospholipase
Storage:	Store at -20°C



Solvent & Solubility

Soluble in DMSO

In Vitro

Preparing Stock Solutions	Solvent Concentration	Mass		
		1mg	5mg	10mg
	1 mM	2.1691 mL	10.8455 mL	21.6910 mL
	5 mM	0.4338 mL	2.1691 mL	4.3382 mL
	10 mM	0.2169 mL	1.0846 mL	2.1691 mL

Please refer to the solubility information to select the appropriate solvent.

Biological Activity

Shortsummary

Orally active, allosteric inhibitor of Wip1 phosphatase

 IC₅₀ & Target

In Vitro

Cell Viability Assay

Preparation method:

In Vivo

Animal experiment

Applications:

Product Citations

See more customer validations on www.apexbt.com.

References

Caution

FOR RESEARCH PURPOSES ONLY.

NOT FOR HUMAN, VETERINARY DIAGNOSTIC OR THERAPEUTIC USE.

Specific storage and handling information for each product is indicated on the product datasheet. Most APEX BIO products are stable under the recommended conditions. Products are sometimes shipped at a temperature that differs from the recommended storage temperature. Shortterm storage of many products are stable in the short-term at temperatures that differ from that required for long-term storage. We ensure that the product is shipped under conditions that will maintain the quality of the reagents. Upon receipt of the product, follow the storage recommendations on the product data sheet.

APEX BIO Technology

www.apexbt.com

7505 Fannin street, Suite 410, Houston, TX 77054.

Tel: +1-832-696-8203 | Fax: +1-832-641-3177 | Email: info@apexbt.com

