

## Certificate of Analysis

Product Name: GLPG0634

Cat. No.: B1130

Batch No.: 2

### Physical and Chemical Properties

Batch Molecular Formula: C<sub>21</sub>H<sub>23</sub>N<sub>5</sub>O<sub>3</sub>S

Batch Molecular Weight: 425.5

Purity: >99%

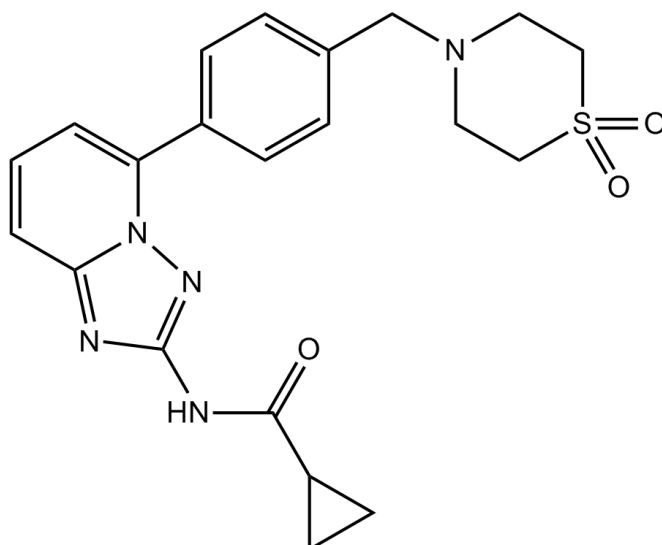
Cas No.: 1206161-97-8

### Analytical Data

HPLC: HPLC

Mass Spectrum: Consistent with structure

### Structure



Caution

**FOR RESEARCH PURPOSES ONLY.**

**NOT FOR HUMAN, VETERINARY DIAGNOSTIC OR THERAPEUTIC USE.**

**APEX BIO Technology**

**[www.apexbt.com](http://www.apexbt.com)**

7505 Fannin Street, Suite 410, Houston, TX 77054.

Tel: +1-832-696-8203 | Fax: +1-832-641-3177 | Email: [info@apexbt.com](mailto:info@apexbt.com)