



# High Performance Liquid Chromatography

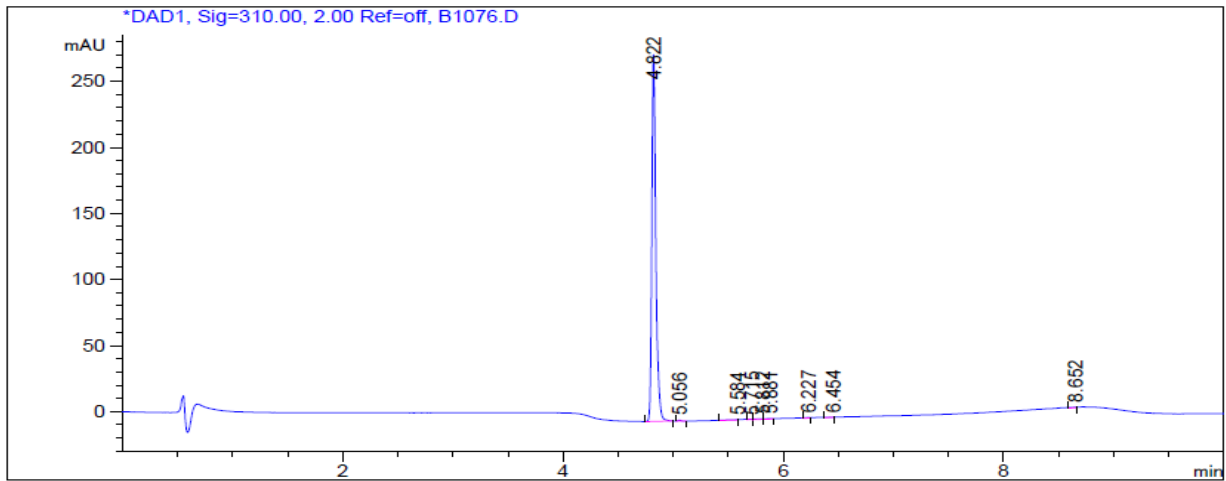
## 1. Analysis Information

Product Name:	Doripenem
Operator:	David
Injection Date:	6/30/2016 7:09:59 PM
Batch No.:	1

## 2. HPLC Condition

Column:	Athena C18, 3 $\mu$ m, 2.1mm $\times$ 100 mm																			
Solvent A:	0.1% H <sub>3</sub> PO <sub>4</sub> in 100% Acetonitrile																			
Solvent B:	0.1% H <sub>3</sub> PO <sub>4</sub> in 100% Water																			
Gradient:	<table border="1"><thead><tr><th>Time</th><th>A</th><th>B</th></tr></thead><tbody><tr><td>0.0min</td><td>0%</td><td>100%</td></tr><tr><td>2.0min</td><td>0%</td><td>100%</td></tr><tr><td>7.0min</td><td>95%</td><td>5%</td></tr><tr><td>10.0min</td><td>95%</td><td>5%</td></tr><tr><td>10.0min</td><td>Stop</td><td>Stop</td></tr></tbody></table>		Time	A	B	0.0min	0%	100%	2.0min	0%	100%	7.0min	95%	5%	10.0min	95%	5%	10.0min	Stop	Stop
Time	A	B																		
0.0min	0%	100%																		
2.0min	0%	100%																		
7.0min	95%	5%																		
10.0min	95%	5%																		
10.0min	Stop	Stop																		
Flow rate:	0.5ml/min																			
Wavelength:	310nm																			
Volume:	3.0 $\mu$ l																			

## 3. Result



Rank	RetTime(min)	Area(mAU*s)	Area %
1	4.822	704.84772	98.2754
2	5.056	1.27613	0.1779
3	5.584	2.12172	0.2958
4	5.715	1.02341	0.1427
5	5.812	1.58803	0.2214
6	5.881	1.74802	0.2437
7	6.227	1.45310	0.2026
8	6.454	1.15276	0.1607
9	8.652	2.00591	0.2797