

High Performance Liquid Chromatography

Analysis Information

Product Name: GDC-0032
Operator: David
Injection Date: 4/1/2019 6:12:26 PM
Batch No.: 1

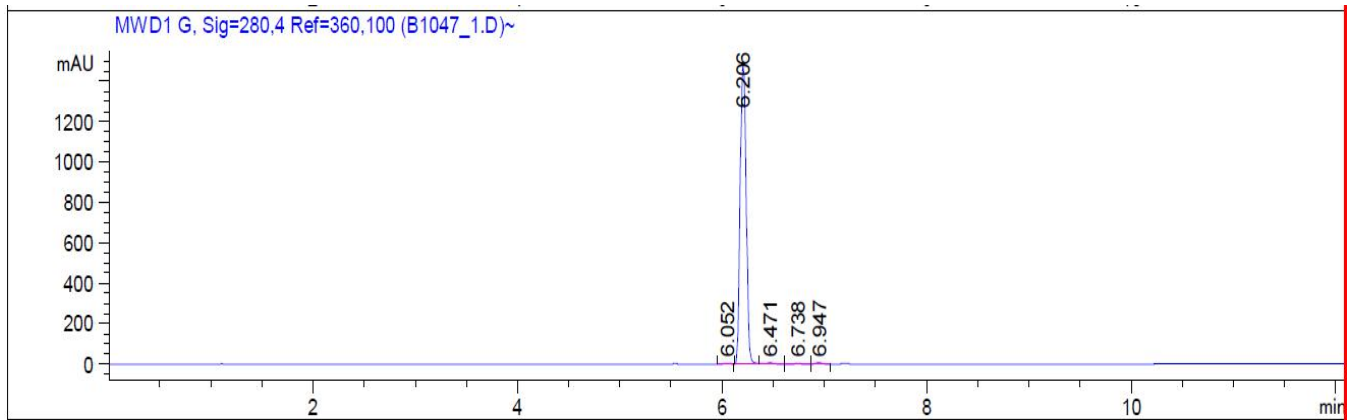
HPLC Condition

Column : ZORBAX Eclipse Pluse C18 3.5 μ m 4.6mmx100mm
Solvent A: H2O+0.1%TFA
Solvent B: ACN+0.1%TFA
Gradient:

| Time | A | B |
|----------|------|------|
| 0.0min | 95% | 5% |
| 2.0min | 95% | 5% |
| 7.0min | 5% | 95% |
| 10.00min | 0% | 100% |
| 12.00min | 0% | 100% |
| 12.10min | 95% | 5% |
| 15.00min | Stop | Stop |

Flow rate: 1mL/min
Wavelength: 280nm
Volume: 3 μ l

Result



| Rank | RetTime(min) | Area(mAU*s) | Area % |
|------|--------------|-------------|---------|
| 1 | 6.052 | 14.31389 | 0.2340 |
| 2 | 6.206 | 6037.24365 | 98.7119 |
| 3 | 6.471 | 25.57312 | 0.4181 |
| 4 | 6.738 | 12.43111 | 0.2033 |
| 5 | 6.947 | 26.46163 | 0.4327 |

Caution

FOR RESEARCH PURPOSES ONLY.

NOT FOR HUMAN, VETERINARY DIAGNOSTIC OR THERAPEUTIC USE.

APExBIO Technology

www.apexbt.com

7505 Fannin street, Suite 410, Houston, TX 77054.

Tel: +1-832-696-8203 | Fax: +1-832-641-3177 | Email: info@apexbt.com