

High Performance Liquid Chromatography

Analysis Information

Product Name: (R)-(-)-Ibuprofen
Operator: David
Injection Date: 5/20/2020 12:27:09 AM
Batch No.: 2

HPLC Condition

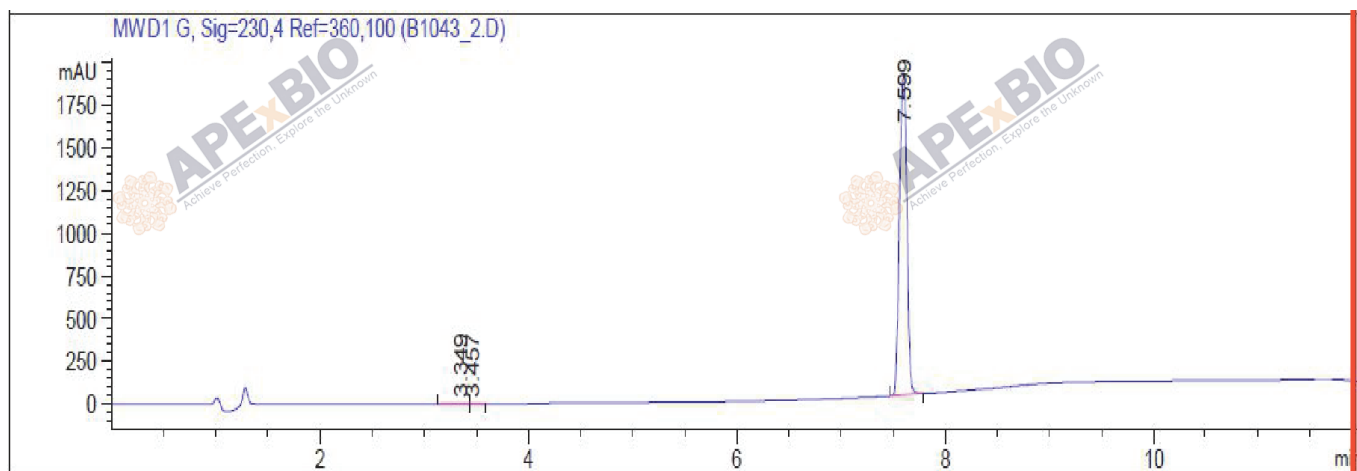
Column : ZORBAX Eclipse Pluse C18 3.5 μ m 4.6mmx100mm
Solvent A: H2O+0.1%TFA
Solvent B: ACN+0.1%TFA

Gradient:

| Time | A | B |
|----------|------|------|
| 0.0min | 80% | 20% |
| 2.0min | 80% | 20% |
| 7.0min | 5% | 95% |
| 10.00min | 0% | 100% |
| 12.00min | 0% | 100% |
| 15.00min | Stop | Stop |

Flow rate: 1mL/min
Wavelength: 230nm
Volume: 5 μ l

Result



| Rank | RetTime(min) | Area(mAU*s) | Area % |
|------|--------------|-------------|----------|
| 1 | 3.349 | 2.56403 | 0.0270 |
| 2 | 3.457 | 7.05849e-1 | 7.445e-3 |
| 3 | 7.599 | 9477.49316 | 99.9655 |

Caution

FOR RESEARCH PURPOSES ONLY.

NOT FOR HUMAN, VETERINARY DIAGNOSTIC OR THERAPEUTIC USE.

APEX BIO Technology

www.apexbt.com

7505 Fannin street, Suite 410, Houston, TX 77054.

Tel: +1-832-696-8203 | Fax: +1-832-641-3177 | Email: info@apexbt.com