

High Performance Liquid Chromatography

Analysis Information

Product Name: CM-272
Operator: David
Injection Date: 3/23/2020 10:44:40 AM
Batch No.: 2

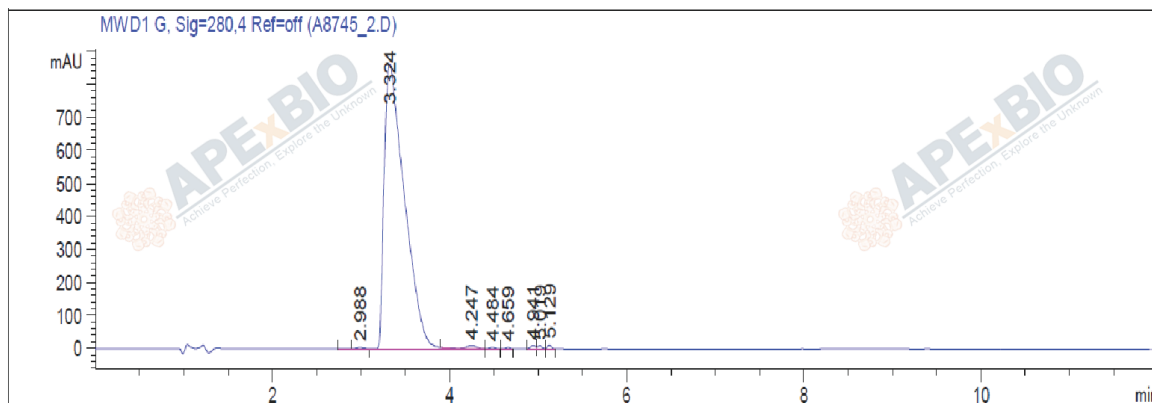
HPLC Condition

Column : ZORBAX Eclipse Pluse C18 3.5 μ m 4.6mmx100mm
Solvent A: H2O+1% TFA
Solvent B: ACN+1% TFA
Gradient:

Time	A	B
0.0min	80%	20%
2.0min	80%	20%
7.0min	5%	95%
10.0min	0%	100%
12.0min	0%	100%
15.0min	Stop	Stop

Flow rate: 1ml/min
Wavelength: 280nm
Volume: 5 μ l

Result



Rank	RetTime(min)	Area(mAU*s)	Area %
1	2.988	21.80493	0.1561
2	3.324	1.37280e4	98.2982
3	4.247	82.80372	0.5929
4	4.484	21.02986	0.1506
5	4.659	13.16520	0.0943
6	4.941	34.87930	0.2497
7	5.019	29.42934	0.2107
8	5.129	34.55447	0.2474

Caution

FOR RESEARCH PURPOSES ONLY.

NOT FOR HUMAN, VETERINARY DIAGNOSTIC OR THERAPEUTIC USE.

APEX BIO Technology

www.apexbt.com

7505 Fannin street, Suite 410, Houston, TX 77054.

Tel: +1-832-696-8203 | Fax: +1-832-641-3177 | Email: info@apexbt.com

