

## Certificate of Analysis

Product Name: Sephin1

Cat. No.: A8708

Batch No.: 2

### Physical and Chemical Properties

Batch Molecular Formula: C<sub>8</sub>H<sub>9</sub>CIN<sub>4</sub>

Batch Molecular Weight: 196.64

Purity: >99%

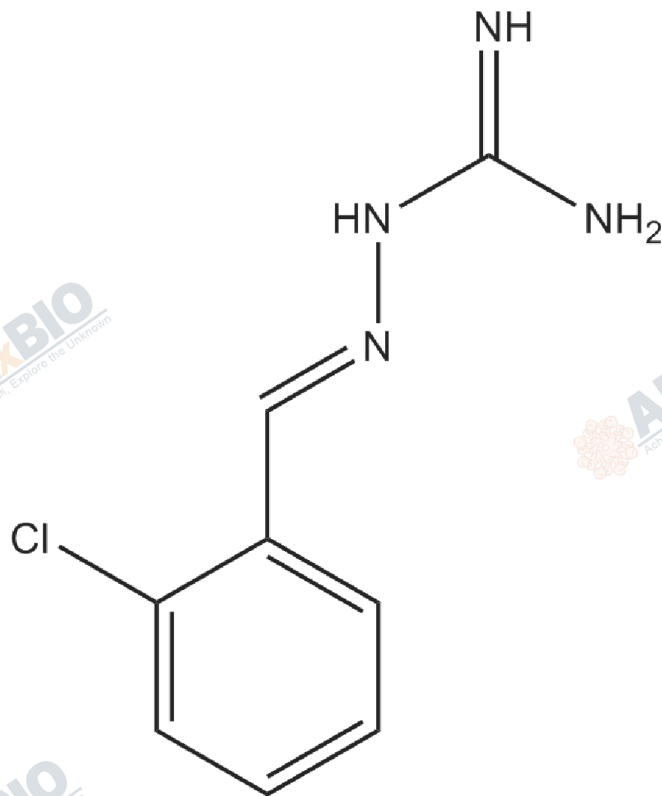
Cas No.: 13098-73-2

### Analytical Data

HPLC: HPLC

Mass Spectrum: Consistent with structure

### Structure



Caution

**FOR RESEARCH PURPOSES ONLY.**

**NOT FOR HUMAN, VETERINARY DIAGNOSTIC OR THERAPEUTIC USE.**

**APEX BIO Technology**

**[www.apexbt.com](http://www.apexbt.com)**

7505 Fannin street, Suite 410, Houston, TX 77054.

Tel: +1-832-696-8203 | Fax: +1-832-641-3177 | Email: [info@apexbt.com](mailto:info@apexbt.com)