

High Performance Liquid Chromatography

Analysis Information

Product Name: FIIN-2
Operator: David
Injection Date: 3/26/2019 10:24:14 AM
Batch No.: 1

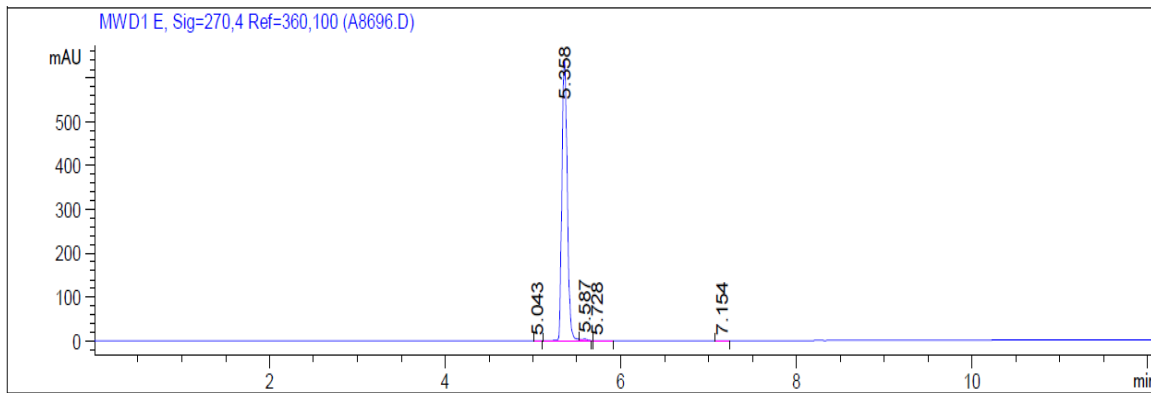
HPLC Condition

Column : ZORBAX Eclipse Pluse C18 3.5 μ m 4.6mmx100mm
Solvent A: H2O+1‰ TFA
Solvent B: ACN+1‰ TFA
Gradient:

Time	A	B
0.0min	80%	20%
2.0min	80%	20%
7.0min	5%	95%
10.0min	0%	100%
12.0min	0%	100%
12.1min	80%	20%
15.0min	Stop	Stop

Flow rate: 1ml/min
Wavelength: 270nm
Volume: 5 μ l

Result



Rank	RetTime(min)	Area(mAU*s)	Area %
1	5.043	1.52550	0.0556
2	5.358	2730.23511	99.4324
3	5.587	11.40030	0.4152
4	5.728	1.75519	0.0639
5	7.154	9.05355e-1	0.0330

Caution

FOR RESEARCH PURPOSES ONLY.

NOT FOR HUMAN, VETERINARY DIAGNOSTIC OR THERAPEUTIC USE.

APEX BIO Technology

www.apexbt.com

7505 Fannin street, Suite 410, Houston, TX 77054.

Tel: +1-832-696-8203 | Fax: +1-832-641-3177 | Email: info@apexbt.com