

High Performance Liquid Chromatography

Analysis Information

Product Name: Progesterone
Operator: David
Injection Date: 5/13/2020 7:12:42 AM
Batch No.: 1

HPLC Condition

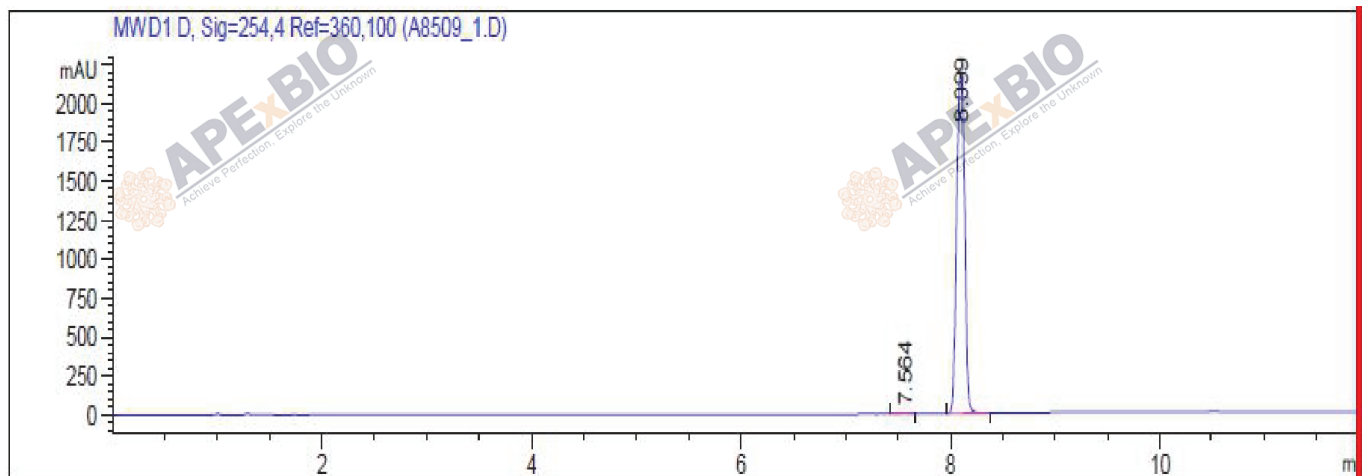
Column : ZORBAX Eclipse Pluse C18 3.5 μ m 4.6mmx100mm
Solvent A: H2O+0.1%TFA
Solvent B: ACN+0.1%TFA

Gradient:

Time	A	B
0.0min	80%	20%
2.0min	80%	20%
7.0min	5%	95%
10.00min	0%	100%
12.00min	0%	100%
15.00min	Stop	Stop

Flow rate: 1mL/min
Wavelength: 254nm
Volume: 5 μ l

Result



Rank	RetTime(min)	Area(mAU*s)	Area %
1	7.564	27.93510	0.2447
2	8.099	1.13902e4	99.7553

Caution

FOR RESEARCH PURPOSES ONLY.

NOT FOR HUMAN, VETERINARY DIAGNOSTIC OR THERAPEUTIC USE.

APExBIO Technology

www.apexbt.com

7505 Fannin street, Suite 410, Houston, TX 77054.

Tel: +1-832-696-8203 | Fax: +1-832-641-3177 | Email: info@apexbt.com