

# High Performance Liquid Chromatography

## Analysis Information

**Product Name:** Progesterone  
**Operator:** David  
**Injection Date:** 6/13/2022 6:21:51 PM  
**Batch No.:** 3

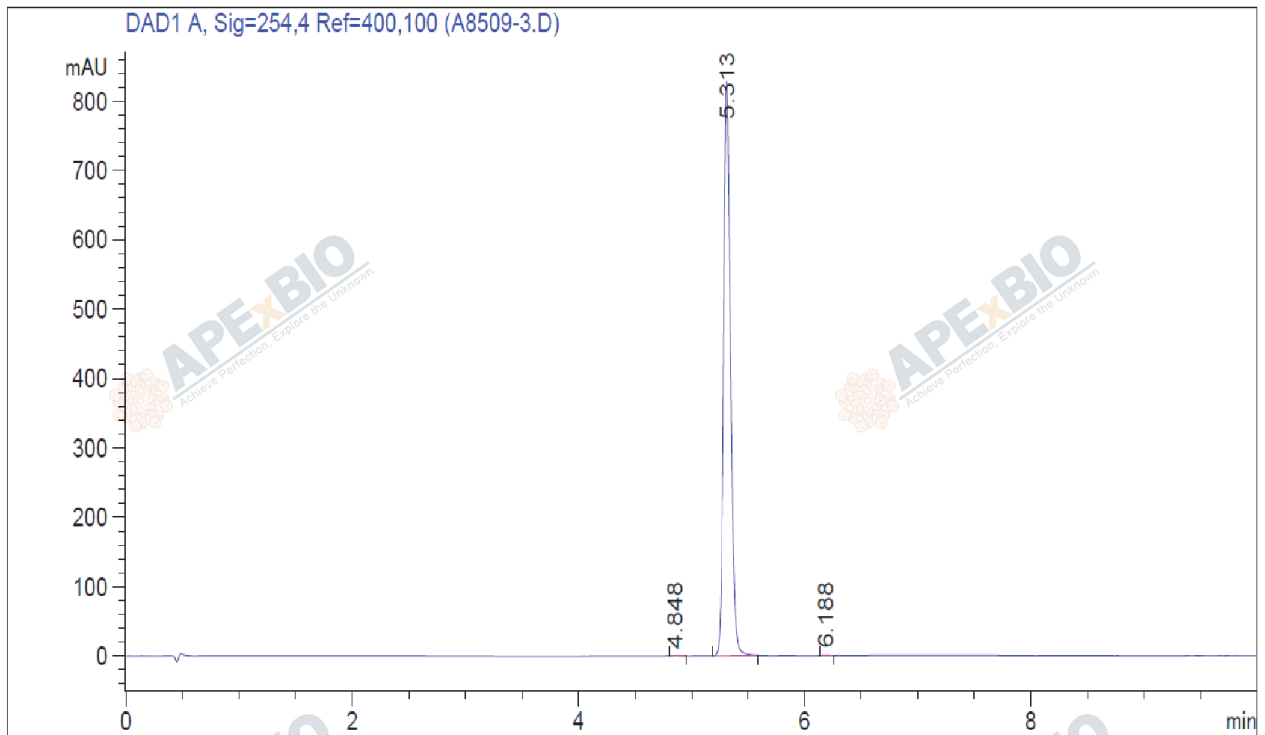
## HPLC Condition

**Column :** Athena C18, 3  $\mu$ m, 2.1mm  $\times$  100 mm  
**Solvent A:** ACN+0.1%TFA  
**Solvent B:** H2O+0.1%TFA  
**Gradient:**

Time	A	B
0.0min	30%	70%
5.0min	95%	5%
10.0min	95%	5%
10.0min	Stop	Stop

**Flow rate:** 0.46ml/min  
**Wavelength:** 254nm  
**Volume:** 3 $\mu$ l

## Result



Rank	RetTime(min)	Area(mAU*s)	Area %
1	4.848	2.47770	0.0687
2	5.313	3601.86548	99.8987
3	6.188	1.17612	0.0326

## Caution

**FOR RESEARCH PURPOSES ONLY.**

**NOT FOR HUMAN, VETERINARY DIAGNOSTIC OR THERAPEUTIC USE.**

**APEX BIO Technology**

**www.apexbt.com**

7505 Fannin street, Suite 410, Houston, TX 77054.

Tel: +1-832-696-8203 | Fax: +1-832-641-3177 | Email: info@apexbt.com