

## Mass Spectrometry

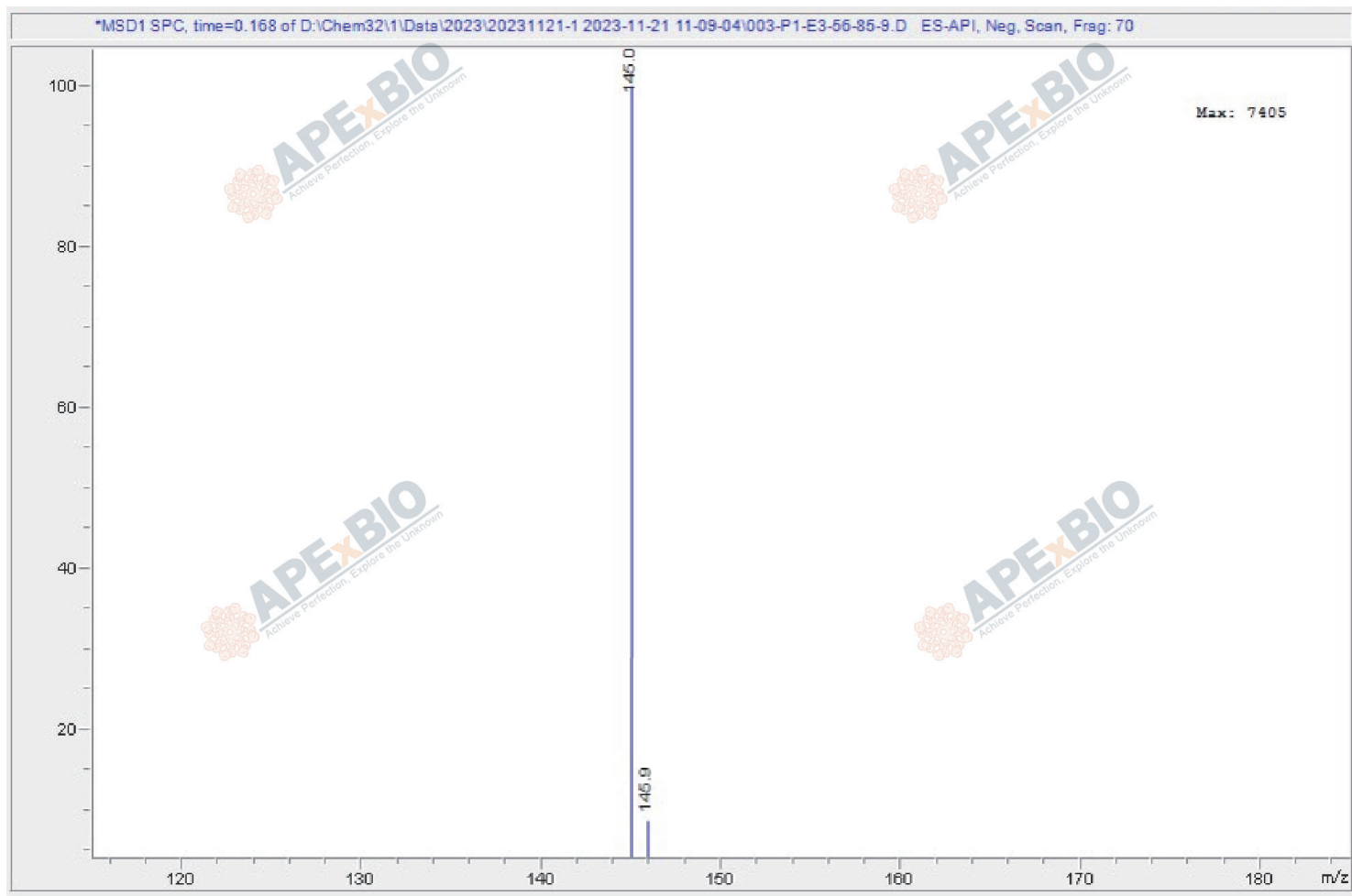
### Analysis Information

**Product Name:** L-Glutamine  
**Operator:** David  
**Injection Date:** 11/21/2023 9:19:39 PM  
**Inj. Volume:** 1  
**Batch No.:** 5

### Acquisition Parameter

**Probe:** ESI  
**Gas Temp:** 350°C  
**Gas Flow:** 11L/min  
**Nebulizer:** 50psi  
**VCap:** 4000v  
**Fragmentor:** 70v  
**Reference:** m/z 121.050873, 922.009798  
**T.Flow:** 0.3ml/min  
**B.conc:** 20%H<sub>2</sub>O/80%ACN

# Result



Molecular Weight: 146.14

m/z([M-H]<sup>-</sup>) Base Peak: 145.0

## Caution

**FOR RESEARCH PURPOSES ONLY.**

**NOT FOR HUMAN, VETERINARY DIAGNOSTIC OR THERAPEUTIC USE.**

**APEX BIO Technology**

[www.apexbt.com](http://www.apexbt.com)

7505 Fannin street, Suite 410, Houston, TX 77054.

Tel: +1-832-696-8203 | Fax: +1-832-641-3177 | Email: [info@apexbt.com](mailto:info@apexbt.com)

