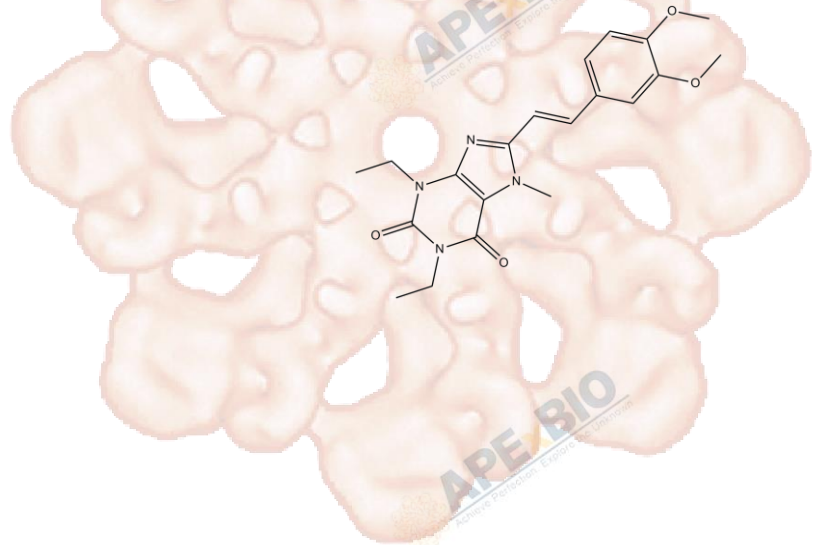


# Product Data Sheet

## Istradefylline (KW-6002)

<b>Cat. No.:</b>	A8454
<b>CAS No.:</b>	155270-99-8
<b>Formula:</b>	C <sub>20</sub> H <sub>24</sub> N <sub>4</sub> O <sub>4</sub>
<b>M.Wt:</b>	384.43
<b>Synonyms:</b>	
<b>Target:</b>	GPCR/G protein
<b>Pathway:</b>	Adenosine Receptor
<b>Storage:</b>	Store at -20°C



### Solvent & Solubility

insoluble in H<sub>2</sub>O; insoluble in EtOH; ≥8.78 mg/mL in DMSO with gentle warming

In Vitro

Preparing Stock Solutions	Solvent		Mass		
	Concentration		1mg	5mg	10mg
	1 mM		2.6013 mL	13.0063 mL	26.0125 mL
	5 mM		0.5203 mL	2.6013 mL	5.2025 mL
	10 mM		0.2601 mL	1.3006 mL	2.6013 mL

Please refer to the solubility information to select the appropriate solvent.

### Biological Activity

Shortsummary

Selective A<sub>2A</sub> receptor antagonist

IC<sub>50</sub> & Target

2.2 nM (A<sub>2A</sub>R)

In Vitro

#### Cell Viability Assay

Preparation method:

In Vivo

#### Animal experiment

Animal models: Lister hooded rats

Dosage form: 4 mg/kg KW6002 by intraperitoneal administration

Applications: KW6002 has a role for tonic activation of A<sub>2A</sub> adenosine receptors in

reward-related phenomena. KW6002 increased dopamine overflow in the rat nucleus accumbens, and also elicited place preference and increased locomotor activity.

Other notes:

Please test the solubility of all compounds indoor, and the actual solubility may slightly differ with the theoretical value. This is caused by an experimental system error and it is normal.

## Product Citations

See more customer validations on [www.apexbt.com](http://www.apexbt.com).

## References

[1] Harper LK, Beckett SR, Marsden CA, McCreary AC, Alexander SP. Effects of the A2A adenosine receptor antagonist KW6002 in the nucleus accumbens in vitro and in vivo. *Pharmacol Biochem Behav.* 2006 Jan;83(1):114-21.

## Caution

**FOR RESEARCH PURPOSES ONLY.**

**NOT FOR HUMAN, VETERINARY DIAGNOSTIC OR THERAPEUTIC USE.**

*Specific storage and handling information for each product is indicated on the product datasheet. Most APExBIO products are stable under the recommended conditions. Products are sometimes shipped at a temperature that differs from the recommended storage temperature. Shortterm storage of many products are stable in the short-term at temperatures that differ from that required for long-term storage. We ensure that the product is shipped under conditions that will maintain the quality of the reagents. Upon receipt of the product, follow the storage recommendations on the product data sheet.*

**APExBIO Technology**

[www.apexbt.com](http://www.apexbt.com)

7505 Fannin street, Suite 410, Houston, TX 77054.

Tel: +1-832-696-8203 | Fax: +1-832-641-3177 | Email: [info@apexbt.com](mailto:info@apexbt.com)